

# GT1790DAT

PARTS LIST



COMPUTER CONTROLLED, HIGH SPEED, LOCKSTITCH  
BUTTON HOLE SEWING MACHINE

**TYPICAL**

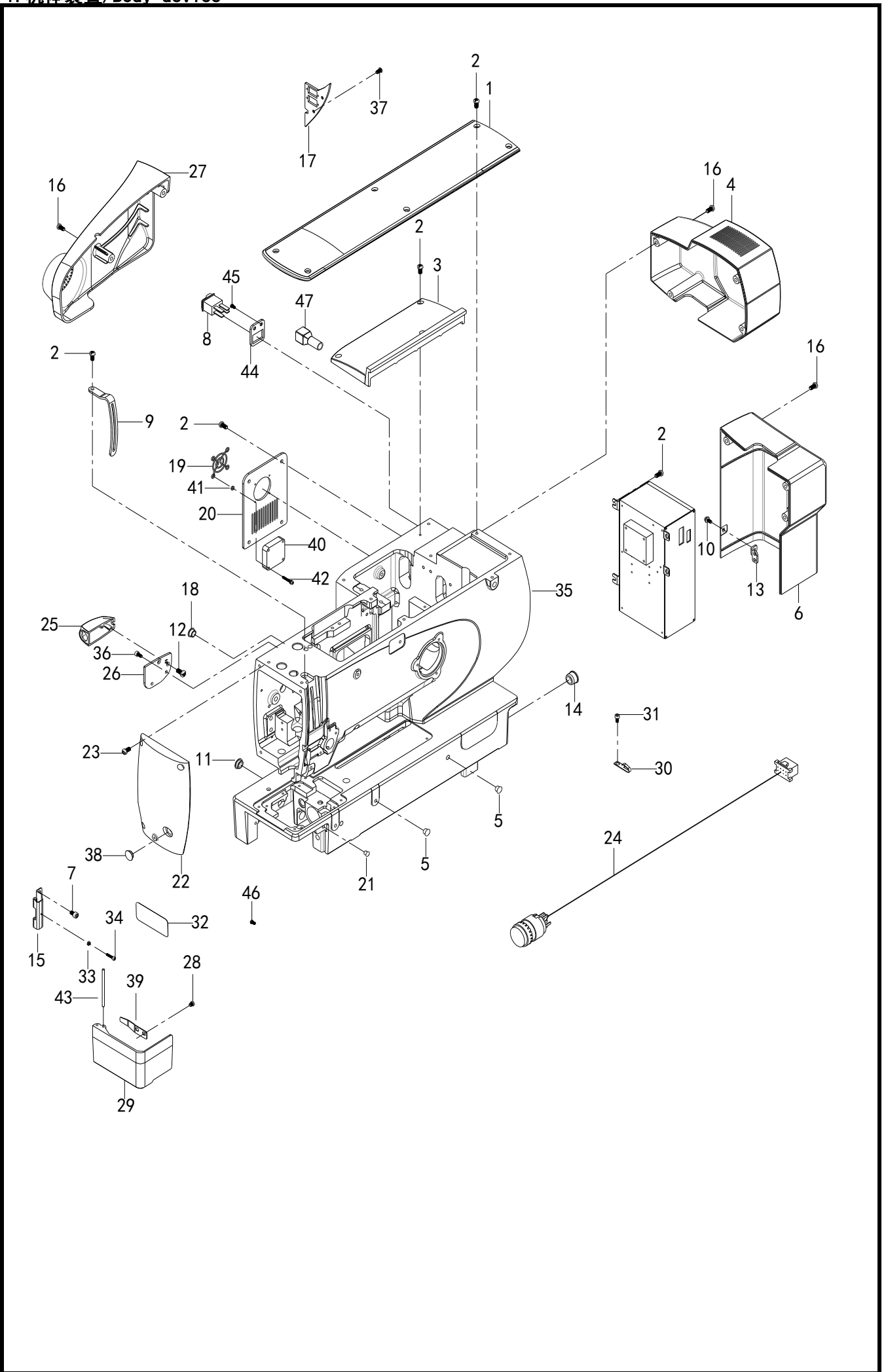
# 目 录

1 机体装置	1
2 穿线装置	3
3 上轴装置	5
4 下轴装置	7
5 压脚、送料装置	9
6 针杆摇动装置	13
7 上剪线装置	15
8 下剪线装置	19
9 切刀装置	23
10 电控箱装置	25
11 操作屏装置	27
12 附件	29
13 线架装置装置	31
14 特殊类型装置	33

# CONTENTS

<b>1 Body device.....</b>	<b>1</b>
<b>2 Threading device.....</b>	<b>3</b>
<b>3 Upper shaft device.....</b>	<b>5</b>
<b>4 Lower shaft device.....</b>	<b>7</b>
<b>5 Presser foot, feeding device.....</b>	<b>9</b>
<b>6 Needle bar rocking device.....</b>	<b>13</b>
<b>7 Upper trimming device.....</b>	<b>15</b>
<b>8 Lower thread trimming device.....</b>	<b>19</b>
<b>9 Cutter device.....</b>	<b>23</b>
<b>10 Electric control box device.....</b>	<b>25</b>
<b>11 Operation screen device.....</b>	<b>27</b>
<b>12 Appendix.....</b>	<b>29</b>
<b>13 Wire rack device parts.....</b>	<b>31</b>
<b>14 Special type parts.....</b>	<b>33</b>

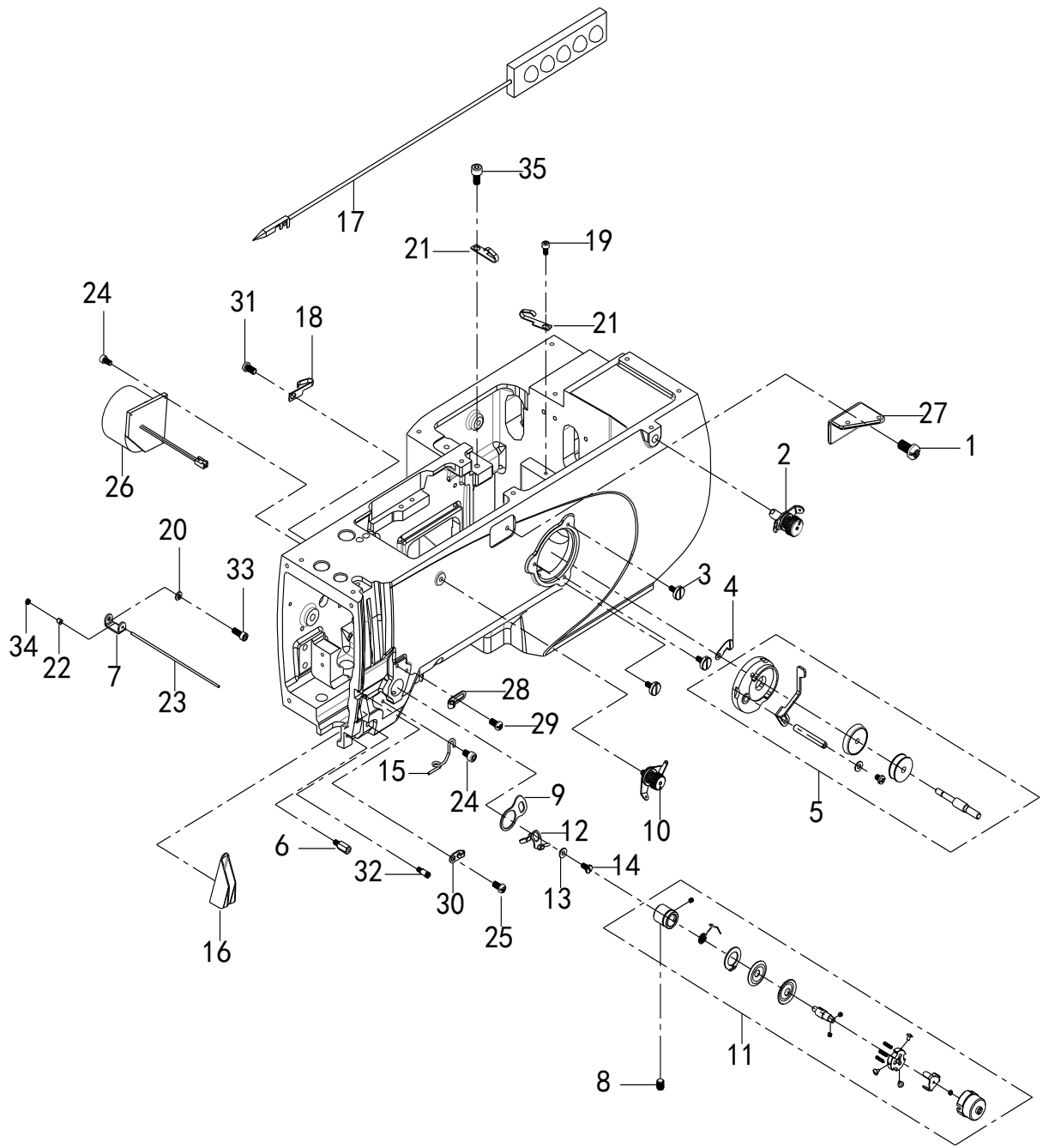
1. 机体装置/Body device



## 1. 机体装置/Body device

NO	零部件号	数量	零部件名称	NAME OF PARTS	老助记码
1	10706630	1	上盖A	COVER A	
2	01405100	18	十字盘头螺钉M5X10	CROSS PAN HEAD SCREW M5X10	
3	10706640	1	上盖B	COVER B	
4	10712090	1	后罩A	COVER AFTER A	
5	13100660	2	橡皮塞8	RUBBER PLUG 8	
6	10712070	1	后罩B	ELECTRIC CONTROL HOUSINGS	
7	01205060	2	内六角螺栓（镀镍）M5X6	HEXAGON SOCKET BOLT (NICKEL PLATED) M5X6	
8	10386570	1	船型开关/R9D8KKET00F10（540）	SHIP SWITCH /R9D8KKET00F10（540）	
9	10707260	1	挑线杆防护罩	POLE GUARD	
10	01504105	1	十字盘头螺钉（带垫圈）M4X10DA	CROSS PAN HEAD SCREW (WITH WASHER)M4X10DA	
11	13100360	1	橡皮塞15.5	RUBBER PLUG 15.5	
12	10742180	2	十字沉头自攻螺钉ST3X10	CROSS COUNTERSUNK HEAD TAPPING SCREWS ST3X10	
13	10707270	1	罩壳支架	COVER BRACKET	
14	13100680	1	橡皮塞17	RUBBER PLUG 17	
15	13100200	1	防护板固定板	GUARD PLATE FIXED PLATE	
16	00705125	9	十字盘头螺钉M5X12		
17	10692550	1	后盖板	HOUGAIBAN	
18	13100300	2	橡皮塞10.5	RUBBER PLUG 10.5	
19	13100840	1	风扇防护网	FAN SHIELD	
20	10692540	1	侧盖板	THE SIDE COVER	
21	13100240	1	橡皮塞5.5	RUBBER PLUG 5.5	
22	10706670	1	前板面	FRONT PANEL	
23	01405100	3	十字盘头螺钉M5X10	CROSS PAN HEAD SCREW M5X10	
24	10750700	1	急停开关线	EMERGENCY STOP SWITCH LINE	
25	10814820	1	急停护罩	SCRAM HOUSINGS	
26	10707290	1	急停罩壳安装板	EMERGENCY STOP HOUSING MOUNTING PLATE	
27	10814810	1	侧护罩	THE SIDE COVER	
28	01404051	1	一十字螺钉（黑色）SM4.34X5	ONE CROSS SCREW (BLACK) SM4.34X5	
29	13100160	1	旋梭防护板	SHUTTLE GUARD PLATE	
30	13100140	1	油管固定架	TUBING BRACKET	
31	01204085	1	内六角螺栓M4X8	HEXAGON SOCKET BOLT M4X8	
32	13100180	1	穿线标签	THREADING LABEL	
33	00403250	1	螺母M3	NUT M3	
34	01203140	1	内六角螺栓（镀镍）M3X14	HEXAGON SOCKET BOLT (NICKEL PLATED) M3X14	
35	10708040	1	1790新款机壳	1790 NEW CASE	
36	01204085	2	内六角螺栓M4X8	HEXAGON SOCKET BOLT M4X8	
37	01204080	2	内六角平圆头螺钉M4X8	HEXAGON SOCKET FLAT ROUND HEAD SCREWS M4X8	
38	13100340	1	橡皮塞12.5	RUBBER PLUG 12.5	
39	13100190	1	弹簧片	LEAF SPRING	
40	10772820	1	风扇	FAN	
41	02000081	4	螺母（镀镍）M3	NUT (NICKEL PLATED) M3	
42	01203140	4	内六角螺栓（镀镍）M3X14	HEXAGON SOCKET BOLT (NICKEL PLATED) M3X14	
43	13100170	1	防护板固定板轴	GUARD PLATE FIXED PLATE SHAFT	
44	10794850	1	开关安装板	SWITCH MOUNTING PLATE	
45	01104080	2	一字沉头螺钉M4X8.7	FLAT COUNTERSUNK HEAD SCREW M4X8.7	
46	02000045	1	一字针杆连接螺钉（黑色）	HEAD BAR CONNECTION SCREW (BLACK)	
47	10809980	1	橡胶护套	RUBBER SHEATH	

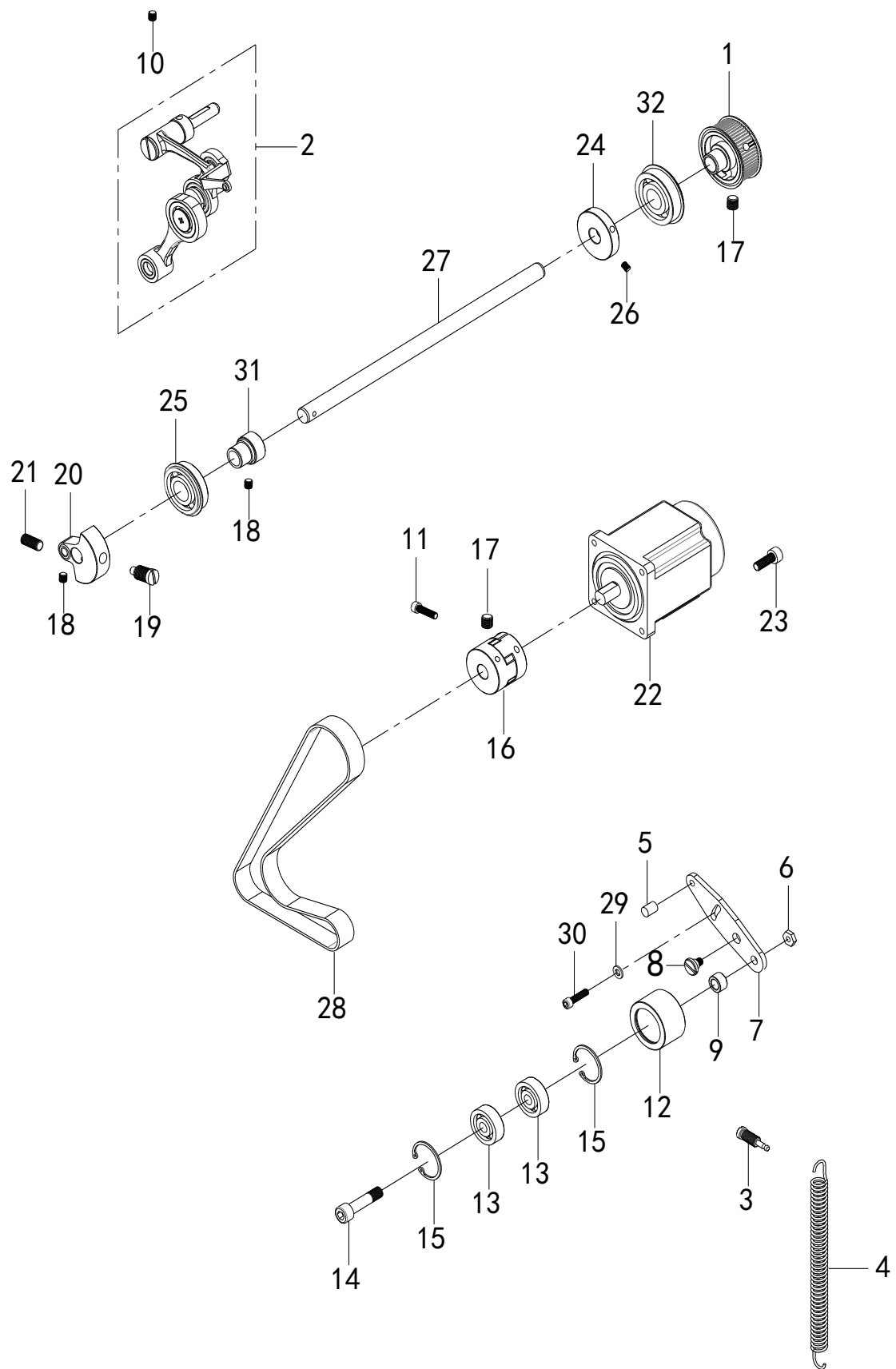
## 2. 穿线装置/Threading device



## 2. 穿线装置/Threading device

NO	零部件号	数量	零部件名称	NAME OF PARTS	老助记码
1	01405100	1	十字盘头螺钉M5X10	PHILLIPS PAN HEAD SCREW M5X10	
2	10707390	1	小夹线器	SMALL THREAD CLAMP	
3	02000043	3	一字平头螺钉M4X10	SLOTTED FLAT HEAD SCREW M4X10	
4	10707380	1	切线刀	THREAD CUTTER	
5	13100920	1	绕线器组件	1790DS WINDER	
6	13104070	1	定位螺钉M4	SET SCREW M4	
7	10668890	1	拉杆支架	TIE ROD BRACKET	
8	00806060	1	内紧定螺钉M6X6	SET SCREW M6X6	
9	15202450	1	导板	GUIDES	
10	13100420	1	张力控制组件	TENSION CONTROL COMPONENTS	
11	10669240	1	紧线器组件	TIGHTER ASSEMBLY	
12	10772580	1	断线感应器	DISCONNECTION SENSOR	
13	15204180	1	尼龙垫片	NYLON GASKET	
14	01904085	1	一字平头螺钉M4X8	SLOTTED FLAT HEAD SCREW M4X8	
15	13100700	1	过线钩	THREAD HOOK	
16	13100970	1	导线槽	WIRE TROUGH	
17	10752070	1	LED灯	LED LIGHTS	
18	13100830	1	铁线夹	IRON CLAMP	
19	01204060	2	内六角螺栓M4X6	HEXAGON SOCKET BOLT M4X6	
20	00604001	1	弹簧垫圈4	SPRING WASHER 4	
21	13100140	2	油管固定架	TUBING HOLDER	
22	10669210	1	卡圈	COLLAR	
23	10668880	1	拉杆	TIE ROD	
24	01205080	3	内六角螺栓M5X8	HEXAGON SOCKET BOLT M5X8	
25	00705080	1	十字盘头螺钉M5X8	PHILLIPS PAN HEAD SCREW M5X8	
26	10772870	1	夹线电磁铁	CLAMPING SOLENOID	
27	10101940	1	过线导向	THREAD GUIDE	
28	13100720	1	过线导向A	THREAD GUIDE A	
29	00705080	1	十字盘头螺钉M5X8	PHILLIPS PAN HEAD SCREW M5X8	
30	13100710	1	过线导向B	THREAD GUIDE B	
31	00705080	1	十字盘头螺钉M5X8	PHILLIPS PAN HEAD SCREW M5X8	
32	13104280	1	缓线钩定位螺钉(镀镍)	SLOW WIRE HOOK POSITIONING SCREW	
33	01304071	1	外六角螺栓M4X7	HEXAGON BOLT M4X7	
34	10001002	1	螺母M2	NUT M2	
35	01206100	1	内六角螺栓M6X10	HEXAGON SOCKET BOLT M6X10	

### 3. 上轴装置/Upper shaft device

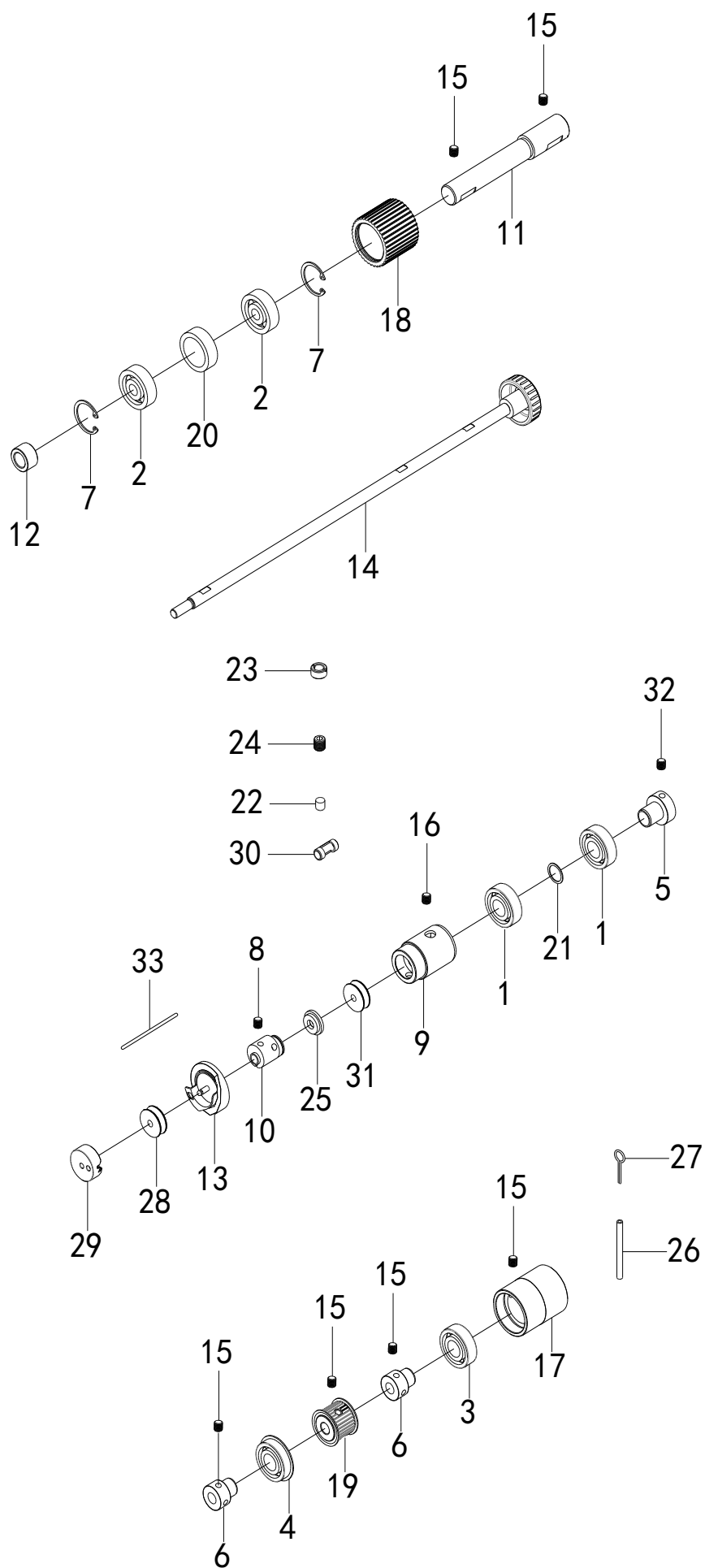




### 3. 上轴装置/Upper shaft device

NO	零部件号	数量	零部件名称	NAME OF PARTS	老助记码
1	13101080	1	上同步轮组件	UPPER SYNCHRONIZATION WHEEL ASSEMBLY	
2	10669140	1	挑线组件	THREAD TAKE-UP ASSEMBLY	
3	13104300	1	挂簧螺钉黑色	HANGING SPRING SCREW BLACK	
4	13101180	1	调整弹簧	ADJUSTING SPRING	
5	13101170	1	挂簧销	HANGING BOLT	
6	00410081	1	螺母黑色M10	NUT BLACK M10	
7	13101140	1	张力轮安装板	TENSION WHEEL MOUNTING PLATE	
8	13104290	1	轴位螺钉外六角	AXIAL SCREW OUTER HEXAGON	
9	13101160	1	垫圈	WASHER	
10	00806060	2	内紧定螺钉M6X6	SET SCREW M6X6	
11	01206251	1	内六角螺栓（黑色）M6X25	HEXAGON SOCKET HEAD BOLT (BLACK) M6X25	
12	13101150	1	张力轮	TENSION WHEEL	
13	00163000	2	轴承6300	BEARING 6300	
14	01210420	1	内六角螺栓M10X42.5	HEXAGON SOCKET BOLT M10X42.5	
15	00203370	2	孔用挡圈C35	RETAINING RING FOR HOLE C35	
16	13101030	1	联轴器	COUPLING	
17	00806081	4	内紧定螺钉M6X8	SET SCREW M6X8	
18	00806060	4	内紧定螺钉M6X6	SET SCREW M6X6	
19	02000189	1	一字螺钉黑色	SLOTTED SCREW BLACK	
20	13101010	1	针杆曲柄	NEEDLE BAR CRANK	
21	00808161	1	内紧定螺钉M8X16	INTERNAL SET SCREW M8X16	
22	10741260	1	主轴电机	SPINDLE MOTOR	
23	01205201	4	内六角螺栓M5X20	HEXAGON SOCKET BOLT M5X20	
24	13101000	1	绕线轮	REEL	
25	00162040	1	轴承套6204	BEARING SLEEVE 6204	
26	00805081	2	内紧定螺钉M5X8	SET SCREW M5X8	
27	13101060	1	上轴	UPPER AXIS	
28	13101130	1	同步带810-3GT-20	SYNCHRONOUS BELT 810-3GT-20	
29	00506161	1	平垫圈6.7×17.6×2	FLAT WASHER 6.7×17.6×2	
30	01306141	1	外六角螺栓M6X16	HEXAGON BOLT M6X16	
31	13100990	1	轴承固定套	BEARING FIXING SLEEVE	
32	00163041	1	轴承6304DU	BEARING 6304DU	

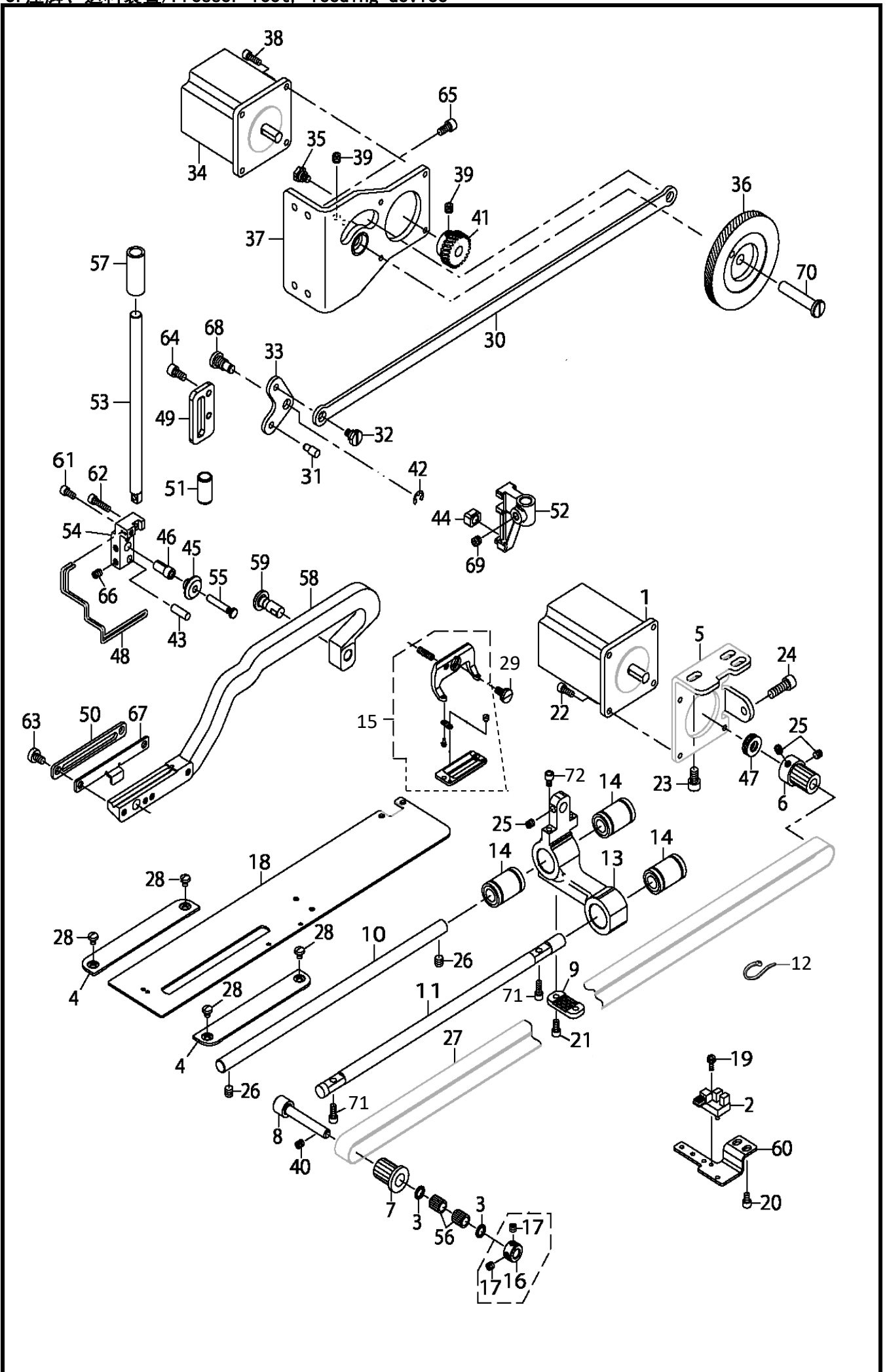
4. 下轴装置/Lower shaft device



## 4. 下轴装置/Lower shaft device

NO	零部件号	数量	零部件名称	NAME OF PARTS	老助记码
1	00106901	2	轴承690	BEARING 690	
2	00160001	2	轴承6000V	BEARING 6000V	
3	00162020	1	轴承6202	BEARING 6202	
4	02000135	1	轴承6202DDUNR	BEARING 6202DDUNR	
5	13101200	1	轴承固定套	BEARING FIXING SLEEVE	
6	13101210	2	轴承固定套	BEARING FIXING SLEEVE	
7	00203270	2	孔用挡圈C27	CIRCLIP FOR HOLE C27	
8	00806401	4	内紧定螺钉SM6. 35X40	INTERNAL SET SCREW SM6. 35X40	
9	13101230	1	下轴前轴套	LOWER AXLE FRONT BUSHING	
10	13101240	1	旋梭连接套组件	ROTARY HOOK CONNECTING SLEEVE ASSEMBLY	
11	13101250	1	中同步带轮轴	MIDDLE SYNCHRONOUS BELT WHEEL SHAFT	
12	13101160	1	垫圈	WASHER	
13	13101280	1	旋梭(1790K)	ROTARY SHUTTLE (1790K)	
13	13101260	1	旋梭(1790S)	ROTARY SHUTTLE (1790S)	
14	13101270	1	手轮组件	HANDWHEEL ASSEMBLY	
15	00806060	9	内紧定螺钉M6X6	SET SCREW M6X6	
16	00806060	1	内紧定螺钉M6X6	SET SCREW M6X6	
17	13101290	1	下轴后轴套	LOWER AXLE REAR BUSHING	
18	13101300	1	中同步带轮	MIDDLE TIMING BELT WHEEL	
19	13101310	1	下同步带轮组件	LOWER SYNCHRONOUS PULLEY ASSEMBLY	
20	13101320	1	衬套	BUSHING	
21	00520010	1	垫圈黑色	WASHER BLACK	
22	13101330	1	调整杆	ADJUSTMENT LEVER	
23	02000082	1	调整螺母黑色	ADJUSTING NUT BLACK	
24	02000190	1	旋梭流量调节螺钉黑色	ROTARY HOOK FLOW ADJUSTMENT SCREW	
25	13101340	1	油毡	LINOLEUM	
26	13101350	0.25	油管3X250 (单位: m)	TUBING 3X250 (UNIT: M)	
27	13101360	1	油线	OIL LINE	
28	13101370	1	梭芯	BOBBIN	
29	13101380	1	梭壳	BOBBIN CASE	
30	13101390	1	油量控制架	FUEL CONTROL FRAME	
31	13101400	1	油毡	LINOLEUM	
32	00805050	2	内紧定螺钉M5X5	SET SCREW M5X5	
33	13101360	1	油线	OIL LINE	

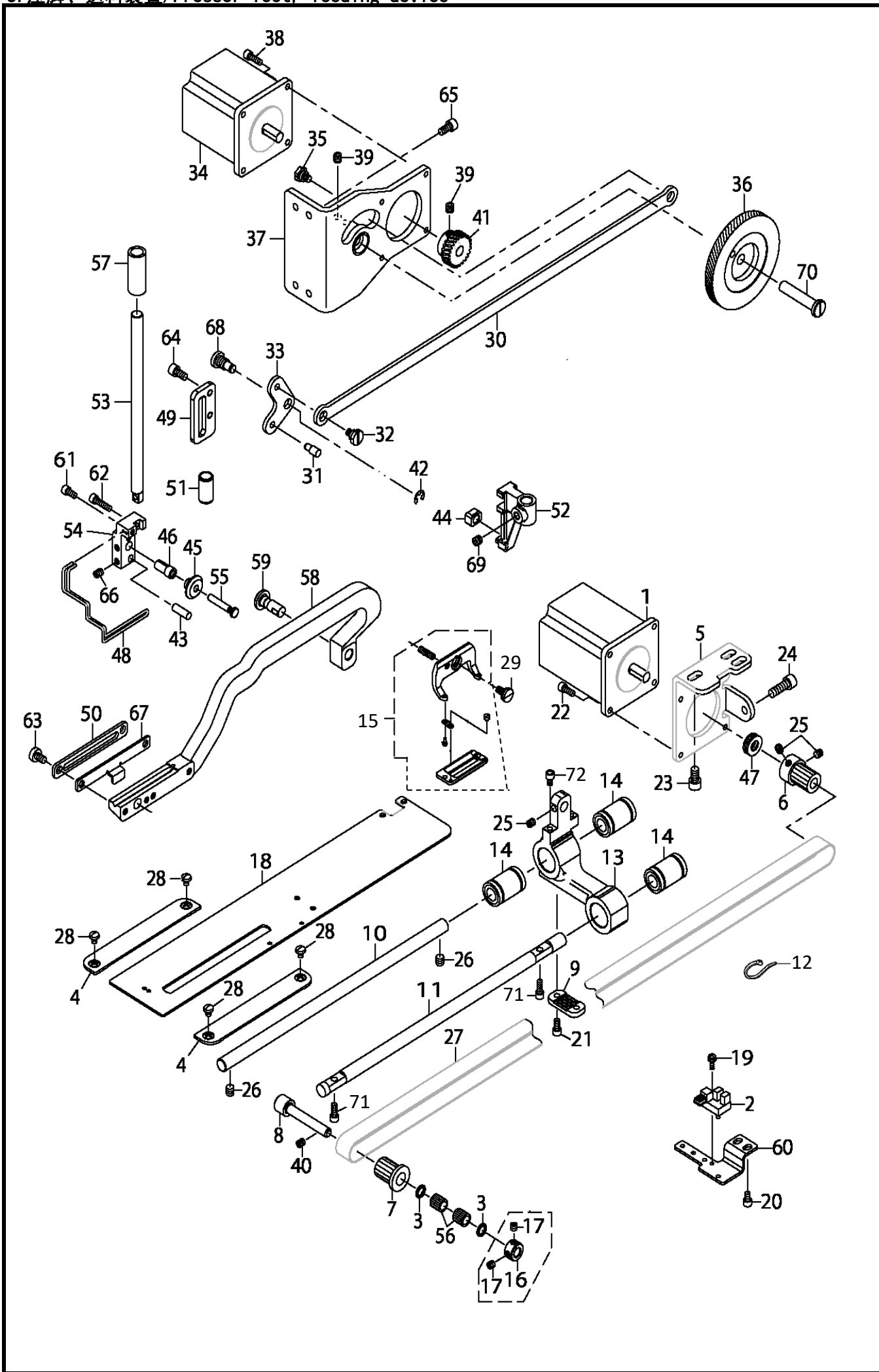
5. 压脚、送料装置/Presser foot, feeding device



## 5. 压脚、送料装置/Presser foot, feeding device

NO	零部件号	数量	零部件名称	NAME OF PARTS	老助记码
1	10736730	1	送布电机	FEEDING MOTOR	
2	10772620	1	送布感应器	FEED SENSOR	
3	13101430	2	封油垫片	SEALING GASKET	
4	13101440	2	固定板	FIXED PLATE	
5	13101450	1	送料步进电机固定架	FEEDING STEPPER MOTOR FIXING FRAME	
6	13101460	1	送料前同步带轮组件	SYNCHRONOUS BELT WHEEL BEFORE FEEDING	
7	13101470	1	送料前同步带轮组件	SYNCHRONOUS BELT WHEEL BEFORE FEEDING	
8	13101480	1	送料前同步轮轴	SYNCHRONOUS AXLE BEFORE FEEDING	
9	13101490	1	固定板	FIXED PLATE	
10	13101500	1	支架轴	BRACKET SHAFT	
11	13101510	1	送布支架导向轴	FEEDING BRACKET GUIDE SHAFT	
12	16300810	2	扎带3X100	CABLE TIE 3X100	
13	13101520	1	送布支架	FEEDING BRACKET	
14	02000129	3	轴向轴承10	AXIAL BEARING 10	
15	13101880	1	压脚组件1790K	PRESSER FOOT ASSEMBLY 1790K	
15	13101900	1	压脚组件1790S	PRESSER FOOT ASSEMBLY 1790S	
16	13101530	1	挡圈	RETAINING RING	
17	00805050	2	内紧定螺钉M5X5	SET SCREW M5X5	
18	13101540	1	送料板	FEEDING PLATE	
19	01503080	1	十字盘头螺钉M3X8DA	PHILLIPS PAN HEAD SCREW M3X8DA	
20	01204060	2	内六角螺栓M4X6	HEXAGON SOCKET BOLT M4X6	
21	02000018	2	内六角螺栓M4X8	HEXAGON SOCKET BOLT M4X8	
22	01204101	4	内六角螺栓M4X12	HEXAGON SOCKET BOLT M4X12	
23	01206100	3	内六角螺栓M6X10	HEXAGON SOCKET BOLT M6X10	
24	01206185	1	内六角螺栓M6X18	HEXAGON SOCKET BOLT M6X18	
25	00805050	3	内紧定螺钉M5X5	SET SCREW M5X5	
26	00806060	2	内紧定螺钉M6X6	SET SCREW M6X6	
27	13101550	1	同步带708-3GT-15	SYNCHRONOUS BELT 708-3GT-15	
28	01904050	4	一字平头螺栓M4X5	FLAT HEAD BOLT M4X5	
29	13104110	1	一字压脚螺钉(镀镍)	SLOTTED PRESSER FOOT SCREW	
30	13101640	1	压脚升降拉杆	PRESSER FOOT LIFTING ROD	
31	13101850	1	连接销	CONNECTING PIN	
32	13104080	1	压脚升降摆动板螺钉外六角黑色	PRESSER FOOT LIFTING PLATE SCREW	
33	13101620	1	压脚升降摆动板	PRESSER FOOT LIFTING SWING PLATE	
34	10736660	1	压脚电机	PRESSER FOOT MOTOR	
35	13104080	1	压脚升降摆动板螺钉外六角黑色	PRESSER FOOT LIFTING PLATE SCREW	
36	13101660	1	压脚升降持齿A组件	PRESSER FOOT LIFTING AND HOLDING TOOTH	
37	13101670	1	压脚电机安装板组件	PRESSER FOOT MOTOR MOUNTING PLATE	
38	01204121	4	内六角螺栓M4X12	HEXAGON SOCKET BOLT M4X12	
39	00806050	4	内紧定螺钉M6X5	SET SCREW M6X5	
40	00805050	1	内紧定螺钉M5X5	SET SCREW M5X5	
41	13101590	1	压脚升降齿轮S	PRESSER FOOT LIFTING GEAR S	
42	00201050	1	挡圈 E5	RETAINING RING E5	
43	13101680	1	压脚支架固定轴	PRESSER FOOT HOLDER FIXED SHAFT	
44	13101580	1	压脚导向连接块	PRESSER FOOT GUIDE CONNECTING BLOCK	
45	13101690	1	滑轮	PULLEY	
46	13101700	1	衬套	BUSHING	
47	00108050	1	送布马达轴承	FEED MOTOR BEARING	
48	13101720	1	防护簧	PROTECTIVE SPRING	
49	13101740	1	压脚杆滑槽	PRESSER FOOT BAR CHUTE	
50	13101750	1	压脚前后送料导向板	FEEDING GUIDE PLATE PRESSER FOOT	
51	13101760	1	压脚杆套	PRESSER FOOT BAR SET	
52	13101780	1	压脚杆升降支架	PRESSER FOOT BAR LIFTING BRACKET	
53	13101790	1	压脚轴	PRESSER FOOT SHAFT	
54	13101800	1	滑轮支架	PULLEY BRACKET	
55	13101810	1	滑轮轴	PULLEY SHAFT	
56	00107091	2	滚针轴承	NEEDLE BEARING	
57	13104390	1	压脚杆轴套	PRESSER FOOT SHAFT SLEEVE	
58	13101830	1	压脚支架	PRESSER FOOT HOLDER	
59	13101840	1	曲柄轴	CRANKSHAFT	

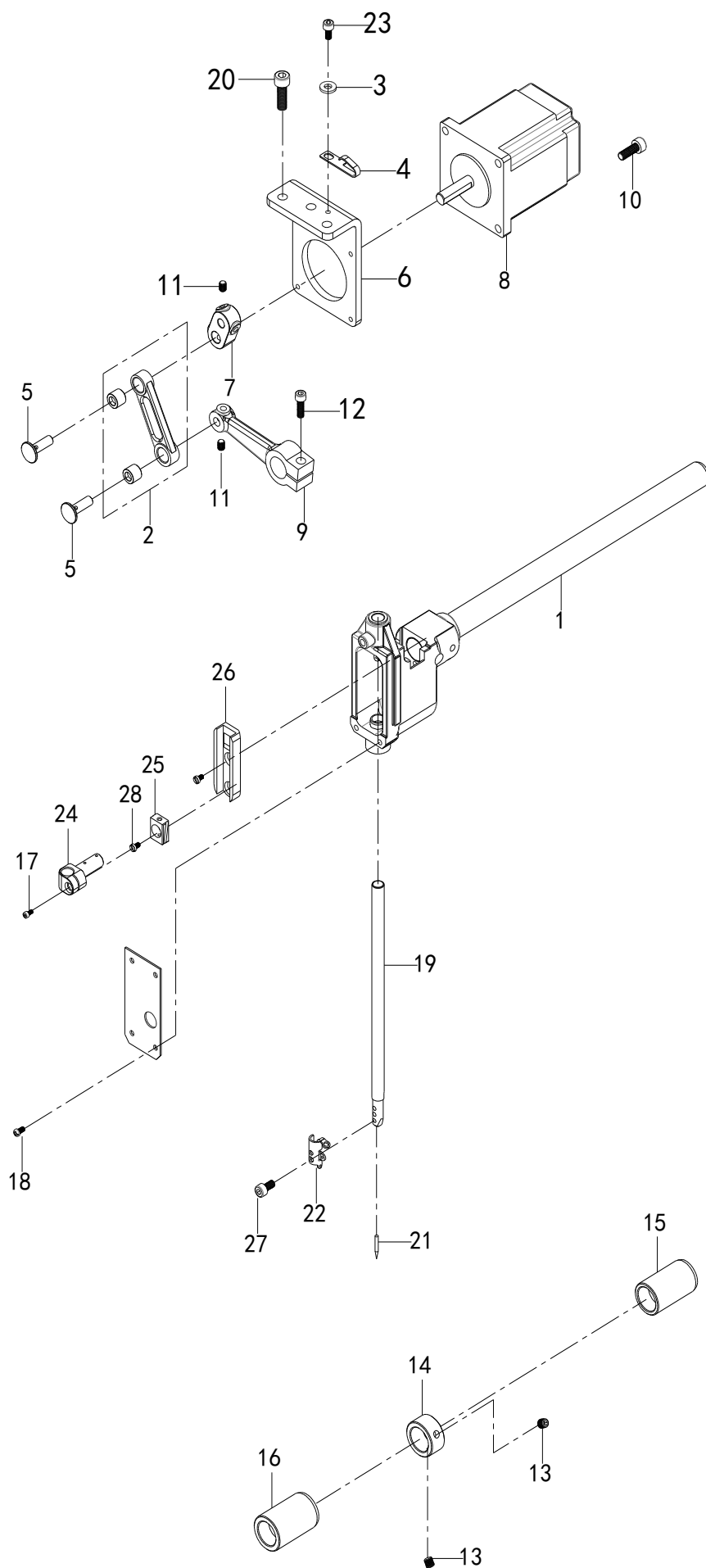
5. 压脚、送料装置/Presser foot, feeding device



## 5. 压脚、送料装置/Presser foot, feeding device

NO	零部件号	数量	零部件名称	NAME OF PARTS	老助记码
60	13101910	1	传感器定位板	SENSOR POSITIONING BOARD	
61	01204085	1	内六角螺栓M4X8	HEXAGON SOCKET BOLT M4X8	
62	01204165	1	内六角螺栓M4X16	HEXAGON SOCKET BOLT M4X16	
63	02000044	2	一字螺钉M5X8	SLOTTED SCREW M5X8	
64	01205101	2	内六角螺栓M5X10	HEXAGON SOCKET BOLT M5X10	
65	01205121	4	内六角螺栓M5X12	HEXAGON SOCKET BOLT M5X12	
66	00805061	2	内紧定螺钉M5X6	SET SCREW M5X6	
67	13101870	1	剪线板	TRIMMING BOARD	
68	13104090	1	压脚升降摆动板螺钉外六角黑色	PRESSER FOOT LIFTING SWING PLATE SCREW	
69	00806060	1	内紧定螺钉M6X6	SET SCREW M6X6	
70	13101600	1	齿轮轴	GEAR SHAFT	
71	01204121	2	内六角螺栓M4X12	HEXAGON SOCKET BOLT M4X12	
72	01204085	2	内六角螺栓M4X8	HEXAGON SOCKET BOLT M4X8	

6. 针杆摇动装置/Needle bar rocking device

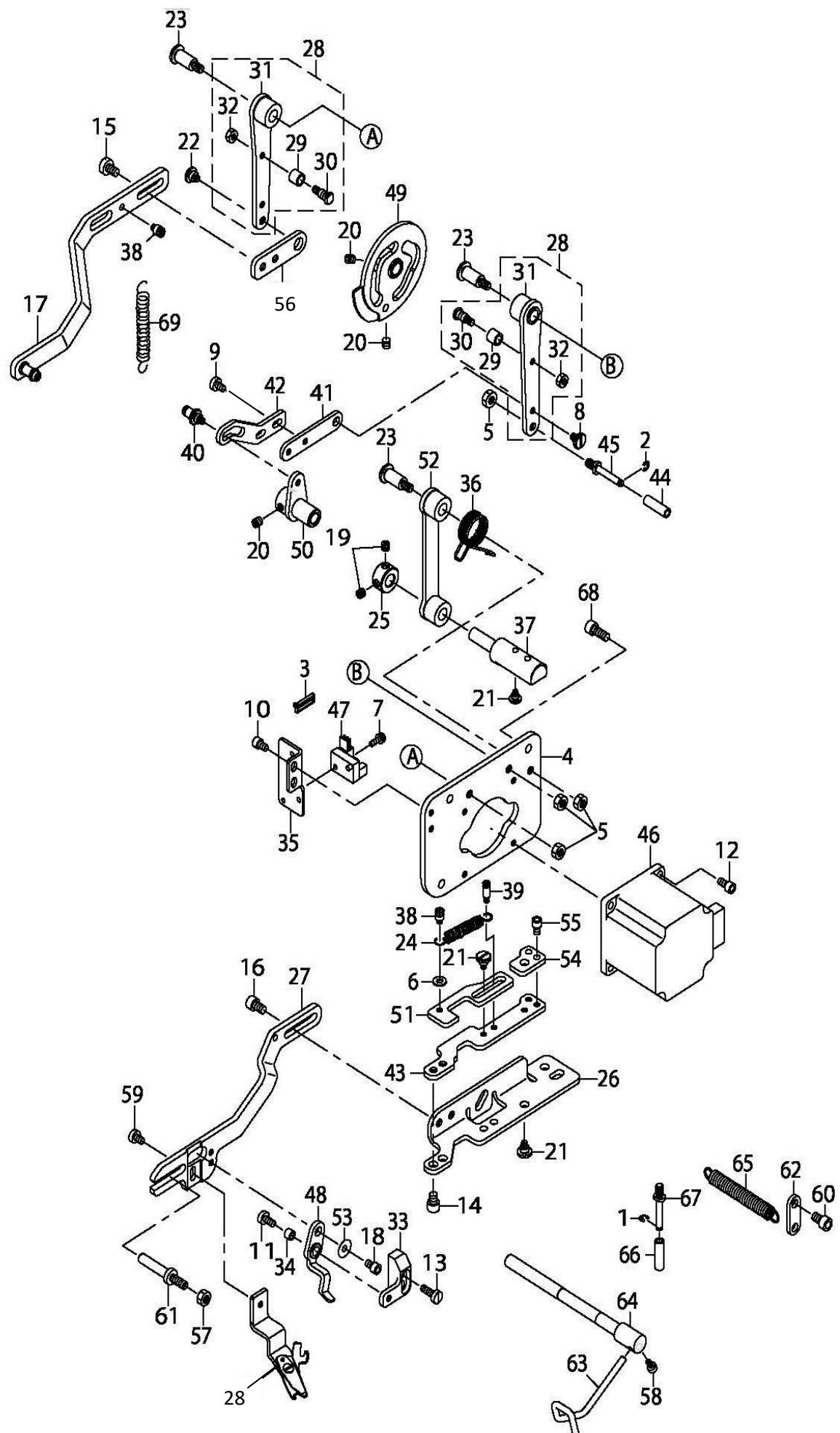




## 6. 针杆摇动装置/Needle bar rocking device

NO	零部件号	数量	零部件名称	NAME OF PARTS	老助记码
1	10666080	1	针杆制动架	1790 CRANK	
2	13101920	1	摆轴连杆组件	PENDULUM SHAFT CONNECTING ROD ASSEMBLY	
3	00504020	1	垫圈4	WASHER 4	
4	13100140	1	油管固定架	TUBING HOLDER	
5	13101930	2	连接轴A	CONNECTING SHAFT A	
6	13101970	1	电机安装板	MOTOR MOUNTING PLATE	
7	13101990	1	电机连接曲柄	MOTOR CONNECTION CRANK	
8	10736630	1	针摆电机	NEEDLE PENDULUM MOTOR	
9	13101950	1	针杆摆动曲柄	NEEDLE BAR SWING CRANK	
10	01204121	4	内六角螺栓 (黑色) M4X12	HEXAGON SOCKET HEAD BOLT (BLACK) M4X12	
11	00805050	6	内紧定螺钉M5X5	SET SCREW M5X5	
12	01206185	1	内六角螺栓 M6X18	HEXAGON SOCKET HEAD BOLT M6X18	
13	00805050	2	内紧定螺钉M5X5	SET SCREW M5X5	
14	13102170	1	摆轴挡圈	PENDULUM SHAFT RETAINING RING	
15	13102120	1	摆轴前套	PENDULUM SHAFT FRONT SLEEVE	
16	13102130	1	摆轴后套	SWING SHAFT BACK SLEEVE	
17	01204085	1	内六角螺栓M4X8	HEXAGON SOCKET BOLT M4X8	
18	02000037	4	十字盘头螺钉M4X10	PHILLIPS PAN HEAD SCREW M4X10	
19	10598130	1	针杆	NEEDLE BAR	
20	01206120	3	内六角螺栓M6X12	HEXAGON SOCKET BOLT M6X12	
21	10780500	1	机针DPX5 (11#)	MACHINE NEEDLE DPX5 11#	
22	13102160	1	面线导线器	UPPER THREAD GUIDE	
23	01204060	1	内六角螺栓M4X6	HEXAGON SOCKET BOLT M4X6	
24	10666070	1	针杆抱箍	NEEDLE BAR HOOP	
25	10666060	1	针杆滑块	NEEDLE BAR SLIDER	
26	10666050	1	滑块导向	SLIDER GUIDE	
27	02000046	1	一字螺钉M3X5	SLOTTED SCREW M3X5	
28	02000044	2	一字平头螺钉M5X8	SLOTTED FLAT HEAD SCREW M5X8	

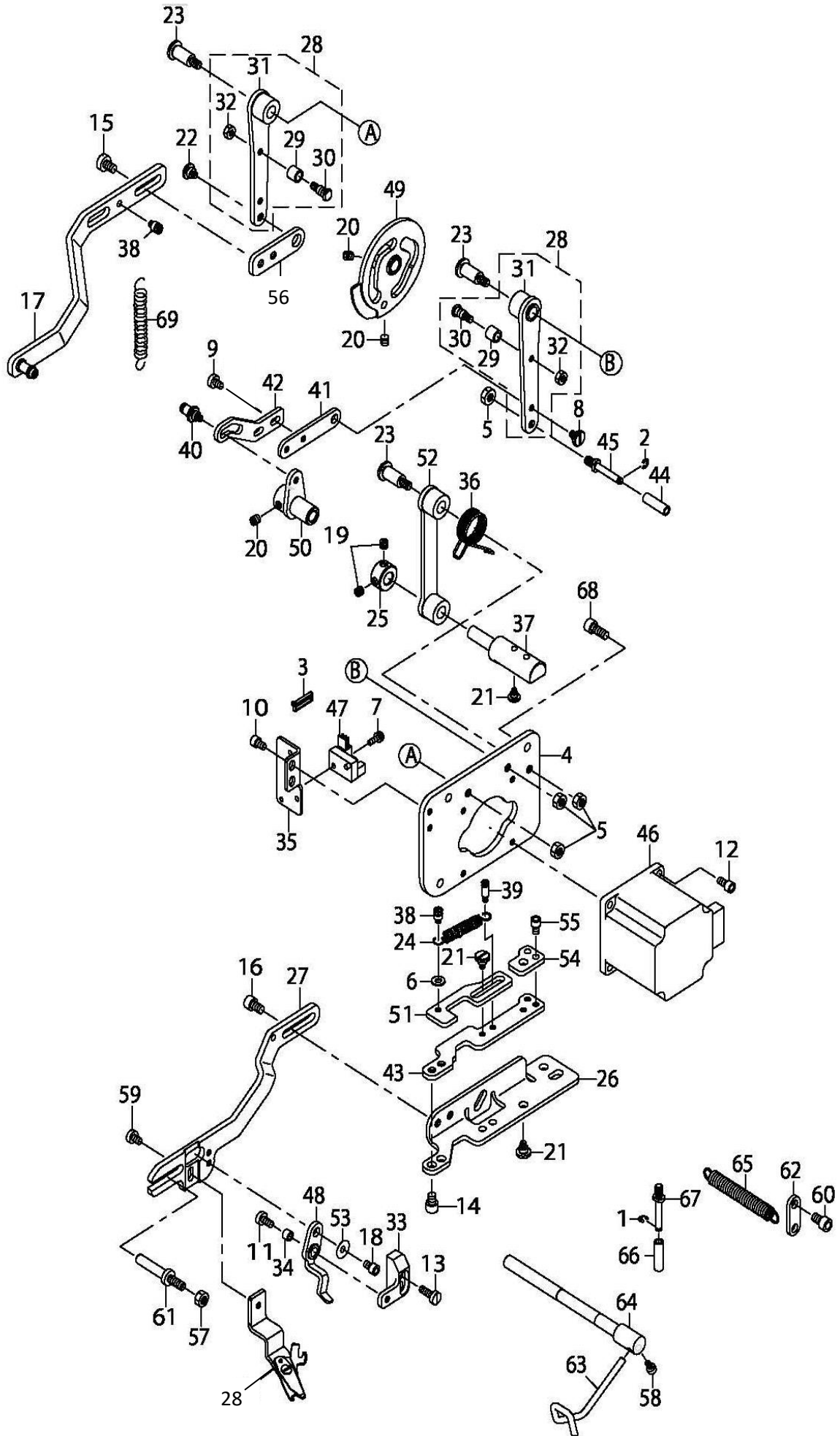
7. 上剪线装置/Upper trimming device



## 7. 上剪线装置/Upper trimming device

NO	零部件号	数量	零部件名称	NAME OF PARTS	老助记码
1	00201030	1	挡圈 E3	RETAINING RING E3	
2	00201030	1	挡圈 E3	RETAINING RING E3	
3	16300810	1	扎带3X100	CABLE TIE 3X100	
4	13102260	1	剪线电机安装板	THREAD TRIMMING MOTOR MOUNTING PLATE	
5	00405380	4	螺母M5	NUT M5	
6	00504020	1	垫圈4	WASHER 4	
7	01503105	1	十字螺钉M3X10	PHILLIPS SCREW M3X10	
8	13104180	1	一字固定板连接螺钉	SLOTTED FIXING PLATE CONNECTING SCREW	
9	01204060	2	内六角螺栓M4X6	HEXAGON SOCKET BOLT M4X6	
10	01204060	2	内六角螺栓M4X6	HEXAGON SOCKET BOLT M4X6	
11	01904085	1	一字平头螺钉M4X8	SLOTTED FLAT HEAD SCREW M4X8	
12	02000018	4	内六角螺栓M4X8	HEXAGON SOCKET BOLT M4X8	
13	02000048	2	一字螺钉M4X12	SLOTTED SCREW M4X12	
14	01205060	2	内六角螺栓M5X6	HEXAGON SOCKET BOLT M5X6	
15	02000044	2	一字螺钉M5X8	SLOTTED SCREW M5X8	
16	01205080	2	内六角螺栓M5X8	HEXAGON SOCKET BOLT M5X8	
17	13102190	1	开剪连杆组件	CUTTING CONNECTING ROD ASSEMBLY	
18	02000018	1	内六角螺栓M4X8	HEXAGON SOCKET BOLT M4X8	
19	00805041	2	内紧定螺钉(黑色)M5X4	SET SCREW (BLACK) M5X4	
20	00805041	4	内紧定螺钉M5X4	SET SCREW M5X4	
21	13104130	4	一字剪线导向调节板螺钉黑色	GUIDE ADJUSTMENT PLATE SCREW	
22	13104140	1	一字剪线连接板螺钉黑色	CONNECTION PLATE SCREW	
23	13104150	3	轴位螺钉黑色	AXIAL SCREW BLACK	
24	13102200	1	导向板弹簧	GUIDE PLATE SPRING	
25	13102210	1	剪线支架连接销挡圈	CONNECTING PIN RETAINING RING	
26	13102230	1	剪线支架	TRIMMING BRACKET	
27	13102240	1	剪刀架	SCISSORS RACK	
28	13102580	1	上剪线刀组件	UPPER THREAD TRIMMER ASSEMBLY	
29	13102270	2	滚柱	ROLLER	
30	13104160	2	滚子连接螺钉	ROLLER CONNECTION SCREW	
31	13102490	2	缓线钩导向曲柄组件	SLOW WIRE HOOK GUIDE CRANK ASSEMBLY	
32	00404031	2	螺母黑色M4	NUT BLACK M4	
33	13102310	1	开剪驱动板安装座	DRIVE PLATE MOUNTING SEAT	
34	13102320	1	连接滚子	CONNECTING ROLLER	
35	13102330	1	传感器安装板	SENSOR MOUNTING PLATE	
36	13102340	1	扭簧	TORSION SPRING	
37	13102350	1	剪线支架连接轴	THREAD TRIMMING BRACKET CONNECTING SHAFT	
38	13104170	2	一字平头轴位螺钉	SLOTTED FLAT HEAD SHAFT SCREW	
39	13104280	1	缓线钩定位螺钉	THREAD HOOK POSITIONING SCREW	
40	13102360	1	缓线连接销	SLOW LINE CONNECTING PIN	
41	13102380	1	缓线钩连接板	SLOW WIRE HOOK CONNECTING PLATE	
42	13102390	1	缓线钩驱动板	SLOW WIRE HOOK DRIVE PLATE	
43	13102400	1	剪刀进退固定板	SCISSORS ADVANCE AND RETREAT FIXED PLATE	
44	13102410	1	滚柱	ROLLER	
45	13102420	1	滚轴	ROLLER	
46	10736740	1	剪线电机	THREAD TRIMMING MOTOR	
47	10772590	1	上剪感应器	UPPER SHEAR SENSOR	
48	13102450	1	开剪驱动板组件	CUTTING DRIVE PLATE ASSEMBLY	
49	13102470	1	剪线凸轮组件	THREAD TRIMMING CAM ASSEMBLY	
50	13102480	1	缓线钩连接曲柄组件	SLOW WIRE HOOK CONNECTING CRANK ASSEMBLY	
51	13102280	1	剪线进退导向板	GUIDE PLATE	
52	13102500	1	剪线连接曲柄组件	THREAD TRIMMING CONNECTING CRANK	
53	00504101	1	垫圈黑色4.3×12×1	WASHER BLACK 4.3×12×1	
54	13102510	1	限位板	LIMIT PLATE	
55	01204060	2	内六角螺栓M4X6	HEXAGON SOCKET BOLT M4X6	
56	13102300	1	剪线连接板	TRIMMING CONNECTION BOARD	
57	00405380	1	螺母M5	NUT M5	
58	01204060	1	内六角螺栓M4X6	HEXAGON SOCKET BOLT M4X6	
59	02000047	1	一字螺钉M4X6	SLOTTED SCREW M4X6	
60	01205080	1	内六角螺栓M5X8	HEXAGON SOCKET BOLT M5X8	

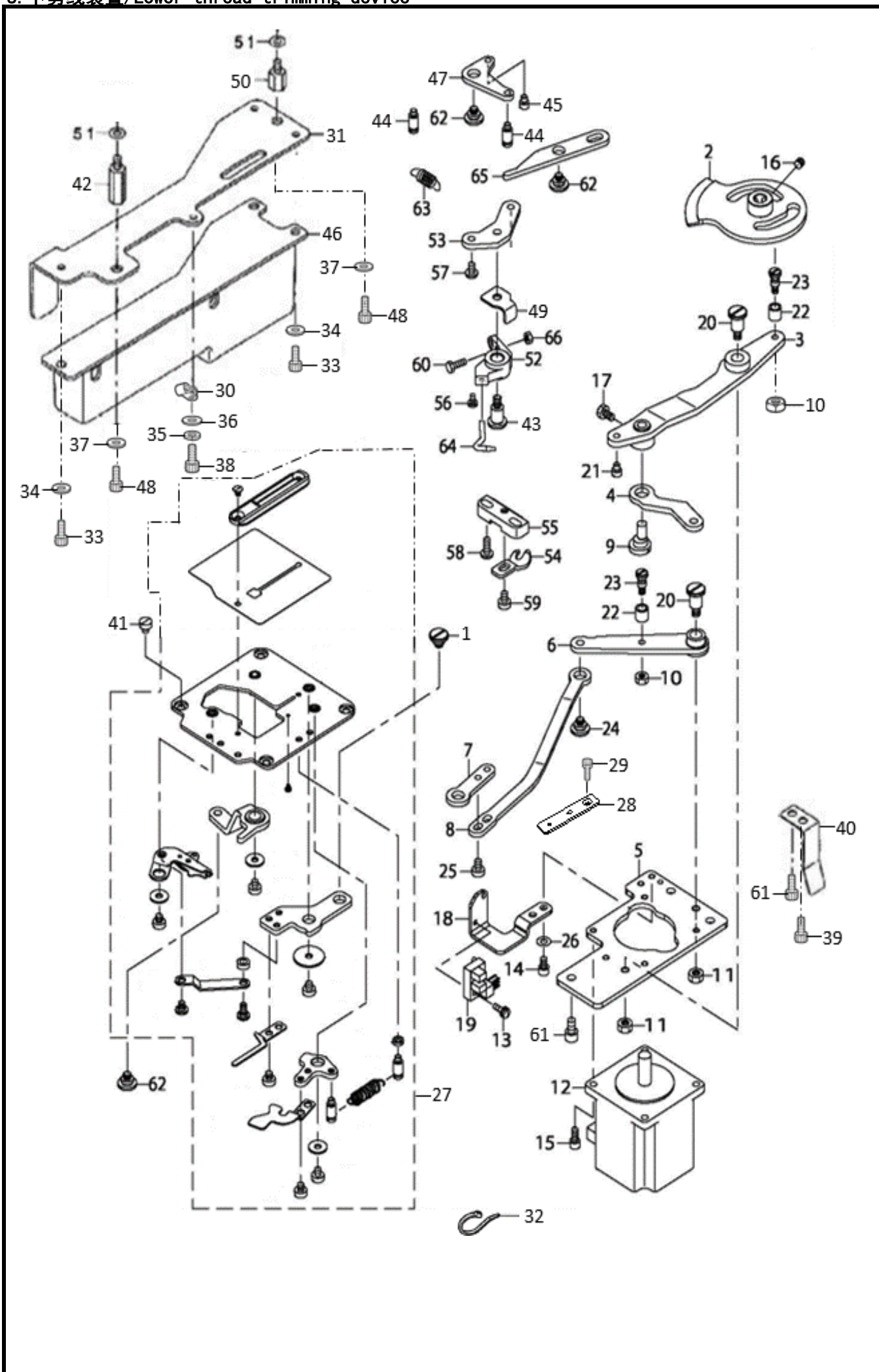
7. 上剪线装置/Upper trimming device



## 7. 上剪线装置/Upper trimming device

NO	零部件号	数量	零部件名称	NAME OF PARTS	老助记码
61	13102520	1	压脚导向轴	PRESSER FOOT GUIDE SHAFT	
62	13102530	1	连接板	CONNECTING PLATE	
63	13102540	1	缓线钩	SLOW WIRE HOOK	
64	13102550	1	缓线钩轴	SLOW THREAD HOOK SHAFT	
65	13102560	1	弹簧	SPRING	
66	13102410	1	滚柱	ROLLER	
67	13102420	1	滚轴	ROLLER	
68	01205121	3	内六角螺栓M5X12	HEXAGON SOCKET BOLT M5X12	
69	13102570	1	缓线钩复位弹簧	SLOW WIRE HOOK RETURN SPRING	

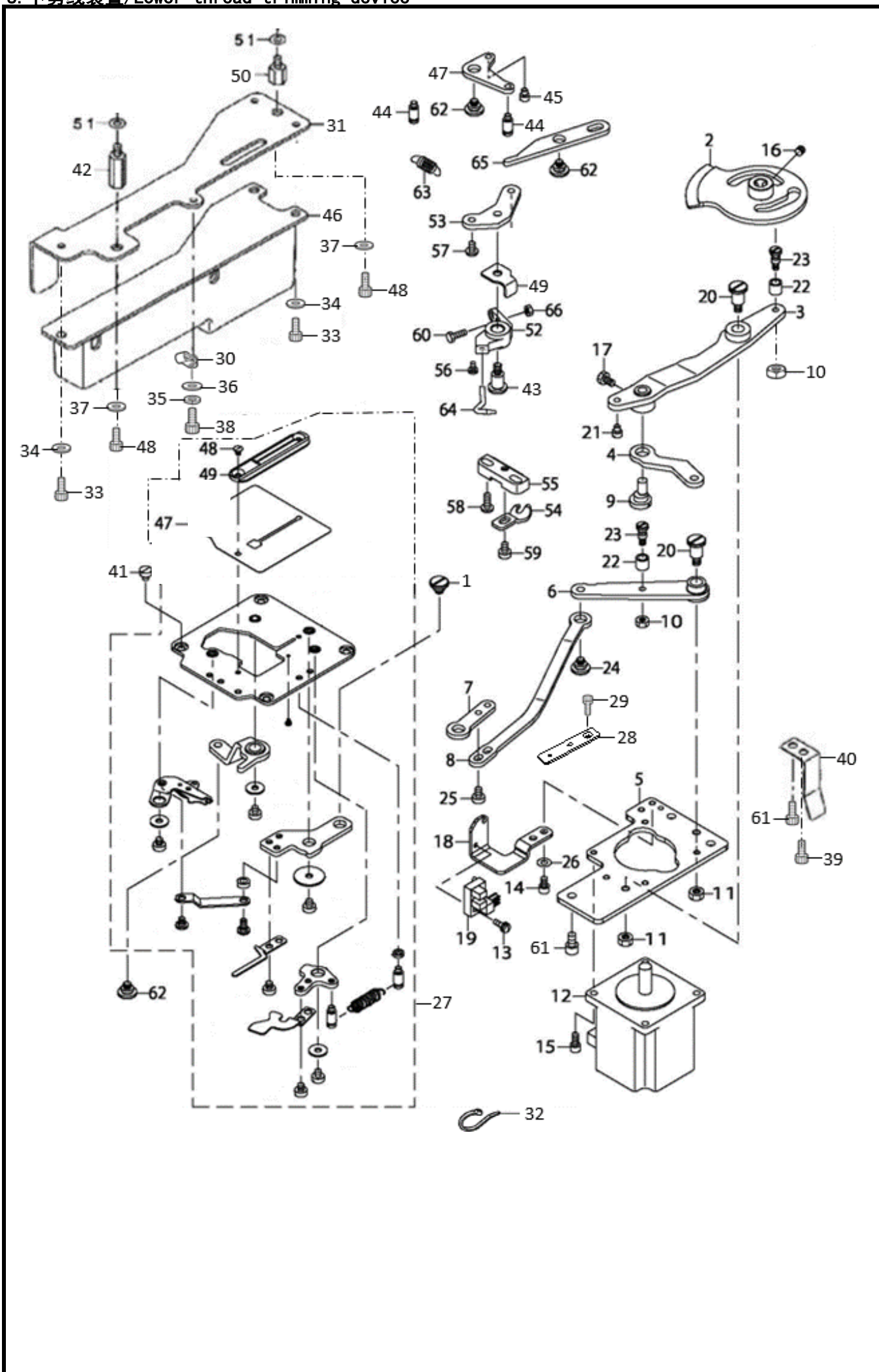
8. 下剪线装置/Lower thread trimming device



## 8. 下剪线装置/Lower thread trimming device

NO	零部件号	数量	零部件名称	NAME OF PARTS	老助记码
1	13104080	1	压脚升降摆动板螺钉外六角黑色	PRESSER FOOT LIFTING SWING PLATE SCREW	
2	13102590	1	剪底线线凸轮组件	BOBBIN THREAD TRIMMING CAM ASSEMBLY	
3	13102600	1	剪底线连杆组件	BOTTOM THREAD CONNECTING ROD ASSEMBLY	
4	13102610	1	剪底线连杆	CUT THE BOTTOM LINE CONNECTING ROD	
5	13102620	1	底线电机安装板	BOTTOM THREAD MOTOR MOUNTING PLATE	
6	13102630	1	剪底结导向曲柄组件	SHEAR BOTTOM KNOT GUIDE CRANK ASSEMBLY	
7	13102640	1	剪刀调节板	SCISSORS ADJUSTMENT PLATE	
8	13102650	1	剪底线导向曲柄连杆	GUIDE CRANK CONNECTING ROD	
9	13102660	1	偏心轴销	ECCENTRIC PIN	
10	00404031	2	螺母黑色M4	NUT BLACK M4	
11	00405380	2	螺母M5	NUT M5	
12	10736750	1	下剪线电机	BOTTOM TRIMMING MOTOR	
13	01503100	1	十字盘头带垫片螺钉M3X10DB	CROSS PAN HEAD SCREW WITH WASHER M3X10	
14	01204060	2	内六角螺栓M4X6	HEXAGON SOCKET BOLT M4X6	
15	02000018	4	内六角螺栓M4X8	HEXAGON SOCKET BOLT M4X8	
16	00805041	2	内紧定螺钉M5X4	SET SCREW M5X4	
17	01304071	1	外六角螺栓M4X7	HEXAGON BOLT M4X7	
18	13102690	1	传感器安装板	SENSOR MOUNTING PLATE	
19	10772600	1	下剪感应器	DOWN CUT SENSOR	
20	13104190	2	轴位螺钉黑色	AXIAL SCREW BLACK	
21	13102700	1	止动销	STOP PIN	
22	13102270	2	滚柱	ROLLER	
23	13104160	2	滚子连接螺钉	ROLLER CONNECTION SCREW	
24	13104200	1	轴位螺钉黑色	AXIAL SCREW BLACK	
25	02000047	2	一字螺钉M4X6	SLOTTED SCREW M4X6	
26	00504020	2	垫圈4	WASHER 4	
27	13102730	1	针板组件(1790K)	NEEDLE PLATE ASSEMBLY (1790K)	
27	13102740	1	针板组件(1790S)	NEEDLE PLATE ASSEMBLY (1790S)	
28	13102870	1	转接板	ADAPTER BOARD	
29	02000002	1	十字沉头螺钉M3X5	CROSS COUNTERSUNK HEAD SCREW M3X5	
30	10103120	1	线夹(3/16)	WIRE CLAMP (3/16)	
31	13102820	1	油盒安装板	OIL TANK MOUNTING PLATE	
32	16300810	1	扎带3X100(黑色)	CABLE TIE 3X100 (BLACK)	
33	01204060	3	内六角螺栓(镀镍)M4X6	HEXAGON SOCKET HEAD BOLT M4X6	
34	00504030	3	平垫圈S4	FLAT WASHER S4	
35	00604000	1	弹簧垫圈2-4	SPRING WASHER 2-4	
36	00504010	1	平垫圈M4	FLAT WASHER M4	
37	00504030	2	平垫圈S4	FLAT WASHER S4	
38	01204085	1	内六角螺栓M4X8	HEXAGON SOCKET BOLT M4X8	
39	01403030	1	一十字螺钉M3X3	ONE PHILLIPS SCREW M3X3	
40	13102800	1	安全开关板	SAFETY SWITCH BOARD	
41	02000050	4	一字螺钉(黑色)M4X4	SLOTTED SCREW (BLACK) M4X4	
42	13104210	1	加长螺钉外六角	EXTENSION SCREW OUTER HEXAGON	
43	13104190	1	轴位螺钉黑色	AXIAL SCREW BLACK	
44	13104280	2	缓线钩定位螺钉	THREAD HOOK POSITIONING SCREW	
45	13102700	1	止动销	STOP PIN	
46	13102810	1	油盒组件	OIL BOX ASSEMBLY	
47	13102860	1	下档线传动板	DOWNSHIFT TRANSMISSION BOARD	
48	01204085	1	内六角螺栓M4X8	HEXAGON SOCKET BOLT M4X8	
49	13102830	1	止动板	STOP PLATE	
50	13104220	1	加长螺钉	EXTENSION SCREW	
51	00504030	2	平垫圈S4	FLAT WASHER S4	
52	13102750	1	下档线器座	DOWNSHIFTER SEAT	
53	13102760	1	下挡线器连接板	LOWER WIRE STOPPER CONNECTING PLATE	
54	13102770	1	旋梭定位钩	ROTARY HOOK POSITIONING HOOK	
55	13102780	1	定位钩安装板	POSITIONING HOOK MOUNTING PLATE	
56	01403040	1	一十字螺钉M3X4	ONE PHILLIPS SCREW M3X4	
57	01204060	1	内六角螺栓M4X6	HEXAGON SOCKET BOLT M4X6	
58	02000049	2	一字螺钉M4X10	SLOTTED SCREW M4X10	
59	02000047	1	一字螺钉M4X6	SLOTTED SCREW M4X6	

8. 下剪线装置/Lower thread trimming device

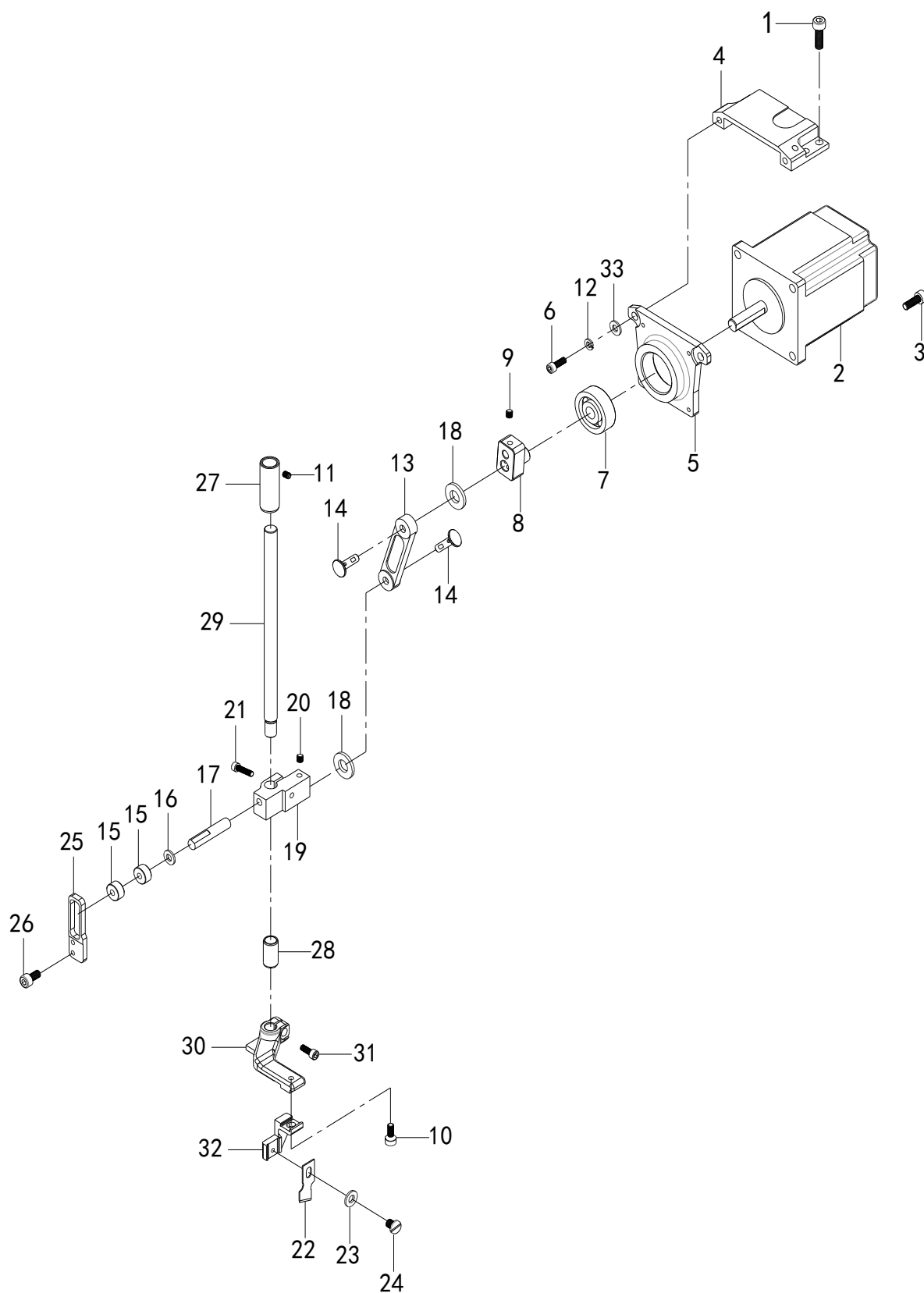




## 8. 下剪线装置/Lower thread trimming device

NO	零部件号	数量	零部件名称	NAME OF PARTS	老助记码
60	02000048	1	一字螺钉M4X12	SLOTTED SCREW M4X12	
61	01205120	3	内六角螺栓M5X12	HEXAGON SOCKET BOLT M5X12	
62	13104200	3	轴位螺钉黑色	AXIAL SCREW BLACK	
63	13102790	1	弹簧	SPRING	
64	13102840	1	下挡线器	DOWNSHIFTER	
65	13102850	1	下档线传动杆	DOWNSHIFT TRANSMISSION LEVER	
66	00404031	1	螺母黑色M4	NUT BLACK M4	

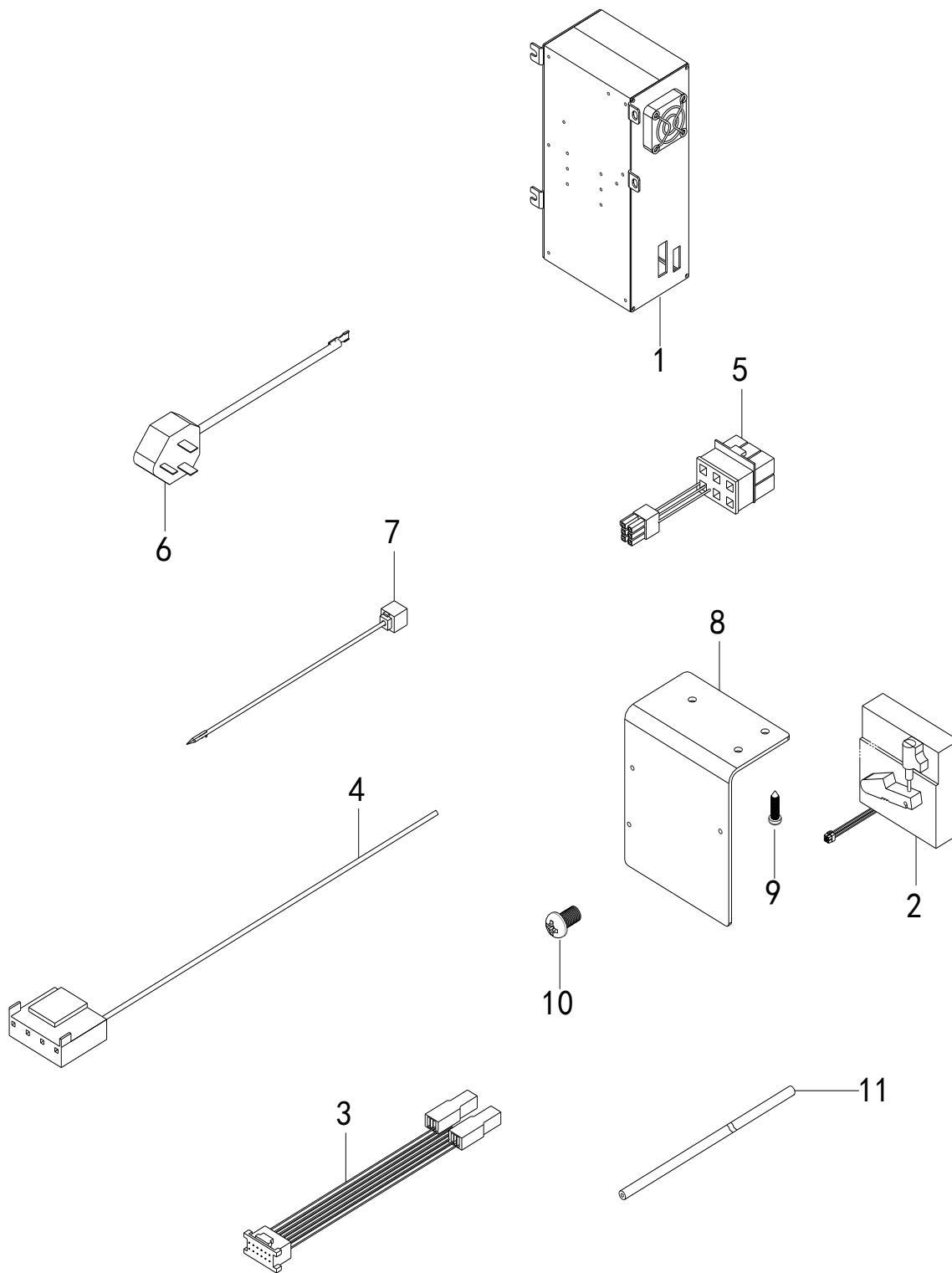
9. 切刀装置/Cutter device



## 9. 切刀装置/Cutter device

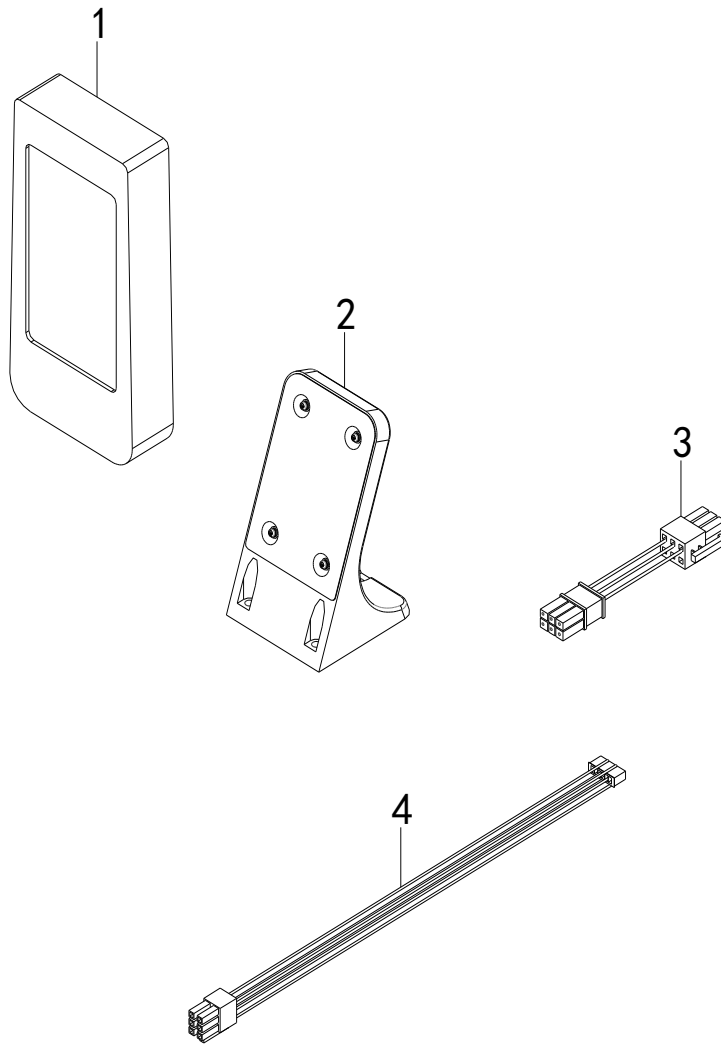
NO	零部件号	数量	零部件名称	NAME OF PARTS	老助记码
1	01205161	4	内六角螺栓M5X16	HEXAGON SOCKET BOLT M5X16	
2	10736720	1	切刀电机	CUTTER MOTOR	
3	01204121	4	内六角螺栓M4X12	HEXAGON SOCKET BOLT M4X12	
4	13103030	1	电机安装板	MOTOR MOUNTING PLATE	
5	13103020	1	电机安装座	MOTOR MOUNT	
6	01206140	2	内六角螺栓 M6X14	HEXAGON SOCKET HEAD BOLT M6X14	
7	00162010	1	轴承6201ZZ	BEARING 6201ZZ	
8	13102900	1	刀杆座	TOOL HOLDER	
9	00805050	3	内紧定螺钉M5X5	SET SCREW M5X5	
10	01205121	1	内六角螺栓M5X12	HEXAGON SOCKET BOLT M5X12	
11	00805081	1	内紧定螺钉M5X8	SET SCREW M5X8	
12	00606000	2	弹簧垫圈	SPRING WASHER	
13	13103120	1	切刀驱动连杆	CUTTER DRIVE CONNECTING ROD	
14	13101930	2	连接轴A	CONNECTING SHAFT A	
15	13103230	2	轴承 604ZZ	BEARING 604ZZ	
16	00504030	1	平垫圈S4	FLAT WASHER S4	
17	13103160	1	支撑轴	SUPPORT SHAFT	
18	00506050	2	平垫圈M6	FLAT WASHER M6	
19	13103090	1	切刀杆支架	CUTTER BAR BRACKET	
20	00805050	1	内紧定螺钉M5X5	SET SCREW M5X5	
21	01205160	1	内六角螺栓M5X16	HEXAGON SOCKET BOLT M5X16	
22	13103050	1	刀片1/2 “	BLADE 1/2”	
23	00504020	1	垫圈4	WASHER 4	
24	02000047	1	一字螺钉M4X6	SLOTTED SCREW M4X6	
25	13103250	1	支撑导向板	SUPPORT GUIDE PLATE	
26	01204121	2	内六角螺栓M4X12	HEXAGON SOCKET BOLT M4X12	
27	13103100	1	切刀杆上衬套	UPPER BUSH OF CUTTER BAR	
28	13103170	1	切刀杆下衬套	CUTTER BAR LOWER BUSH	
29	13103060	1	切刀轴	CUTTER SHAFT	
30	13103070	1	切刀杆座	CUTTER BAR SEAT	
31	01206121	1	内六角螺栓M6X12	HEXAGON SOCKET BOLT M6X12	
32	13103180	1	切刀安装座	CUTTER MOUNT	
33	00506080	2	平垫圈M6	FLAT WASHER M6	

10. 电控箱装置/Electric control box device



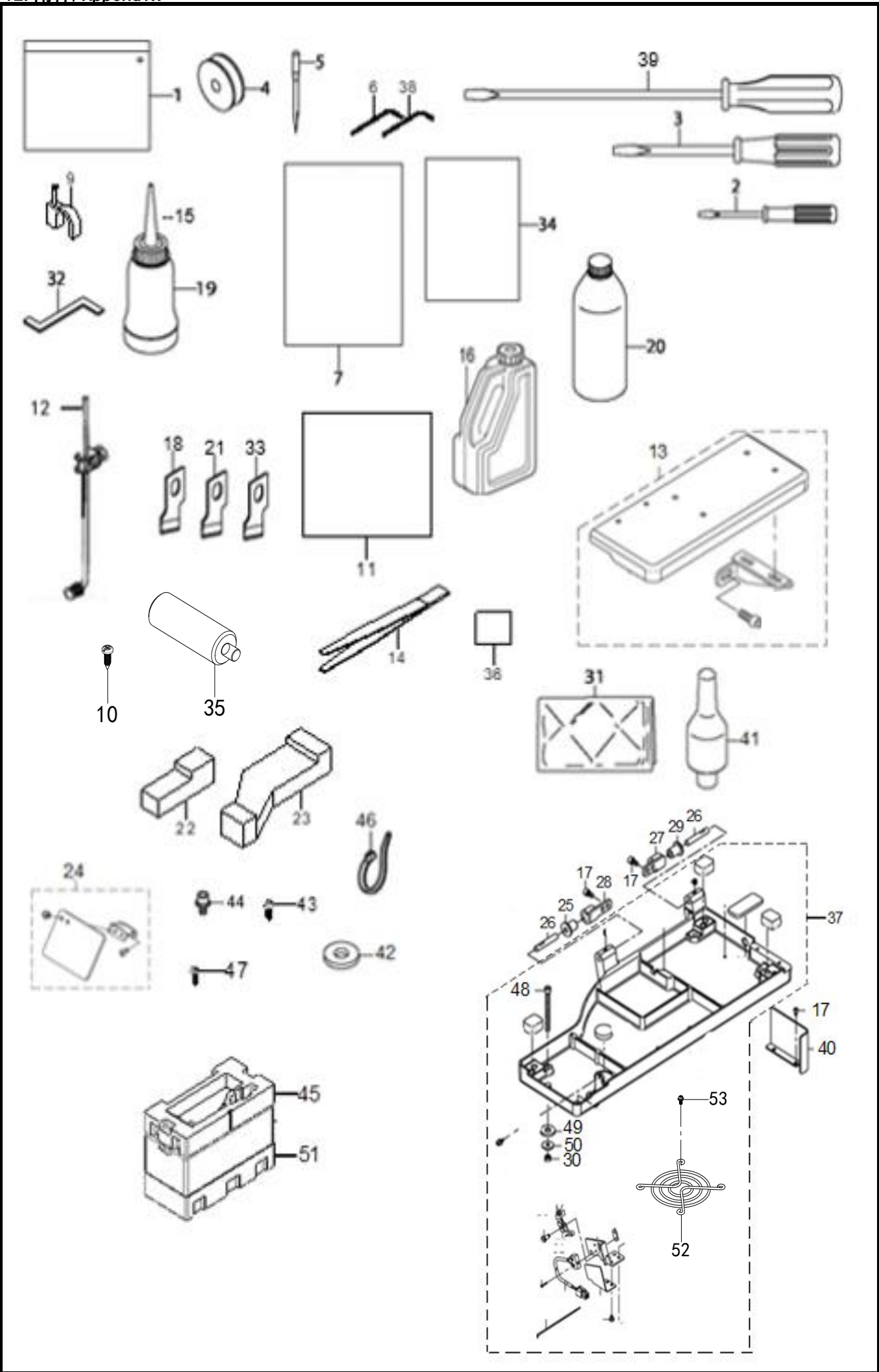
## 10. 电控箱装置/Electric control box device

NO	零部件号	数量	零部件名称	NAME OF PARTS	老助记码
1	10003170	1	1790DS电控箱	1790DS ELECTRIC CONTROL BOX	
2	10744610	1	脚踏板连接线	FOOT PEDAL CABLE	
3	10751970	1	感应器转接线	SENSOR ADAPTER CABLE	
4	10750780	1	电源转接线	POWER ADAPTER	
5	10745890	1	脚踏板转接线	PEDAL ADAPTER CABLE	
6	10752130	1	电源线	POWER CABLE	
7	10752150	1	安全开关转接线	SAFETY SWITCH ADAPTER CABLE	
8	10103380	1	踏板安装板	PEDAL MOUNTING PLATE	
9	02000157	3	木螺钉	WOOD SCREWS	
10	00705065	3	十字盘头螺钉M5X6	PHILLIPS PAN HEAD SCREW M5X6	
11	10822940	1	地线A		



## 11. 操作屏装置/Operation screen device

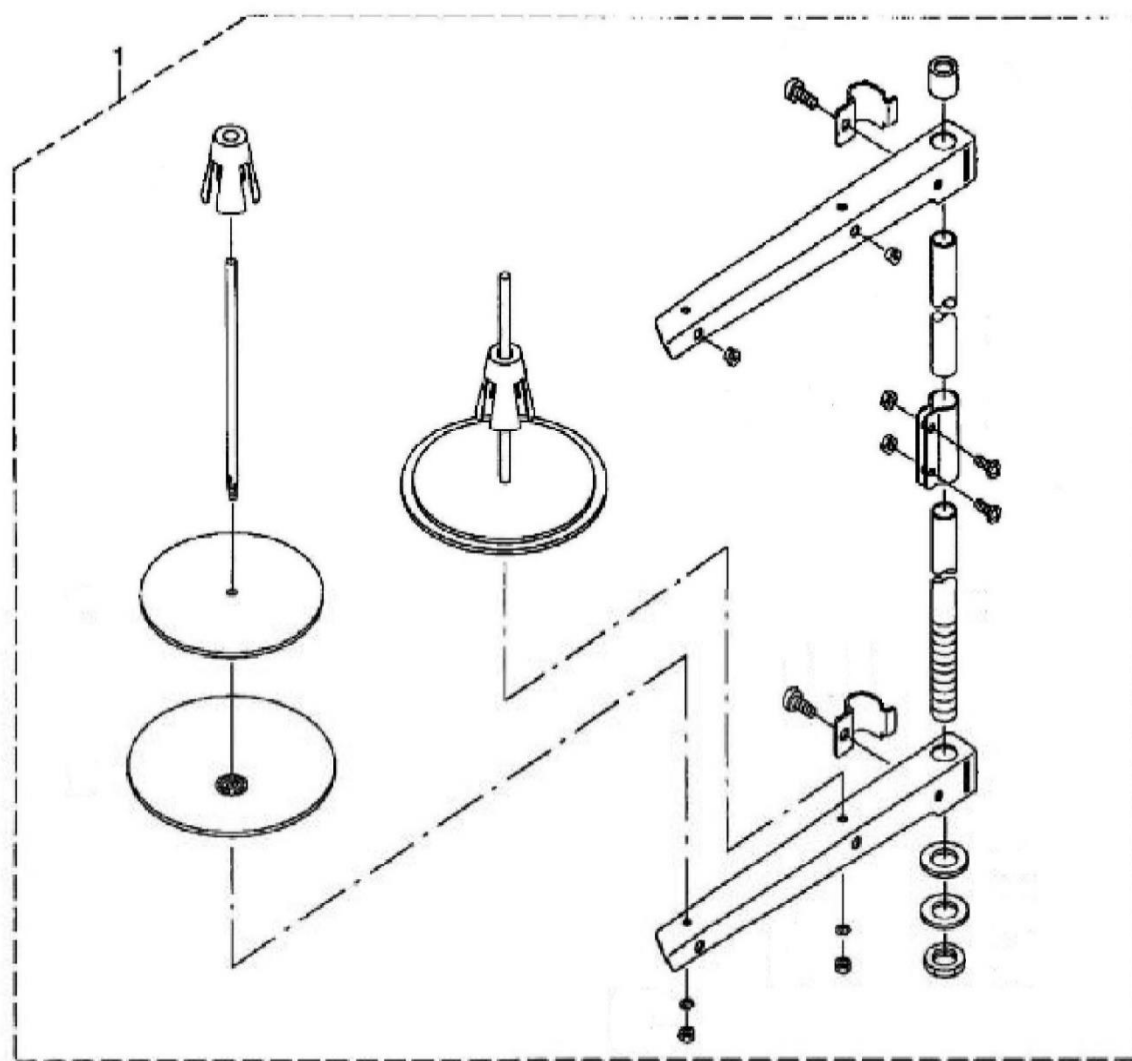
NO	零部件号	数量	零部件名称	NAME OF PARTS	老助记码
1	10830750	1	触摸屏	TOUCH SCREEN	
2	10833550	1	安装座	MOUNTING SEAT	
3	10745880	1	触摸屏转接线	TOUCH SCREEN CABLE	
4	10744440	1	触摸屏连接线	TOUCH SCREEN ADAPTER CABLE	





## 12. 附件/Appendix

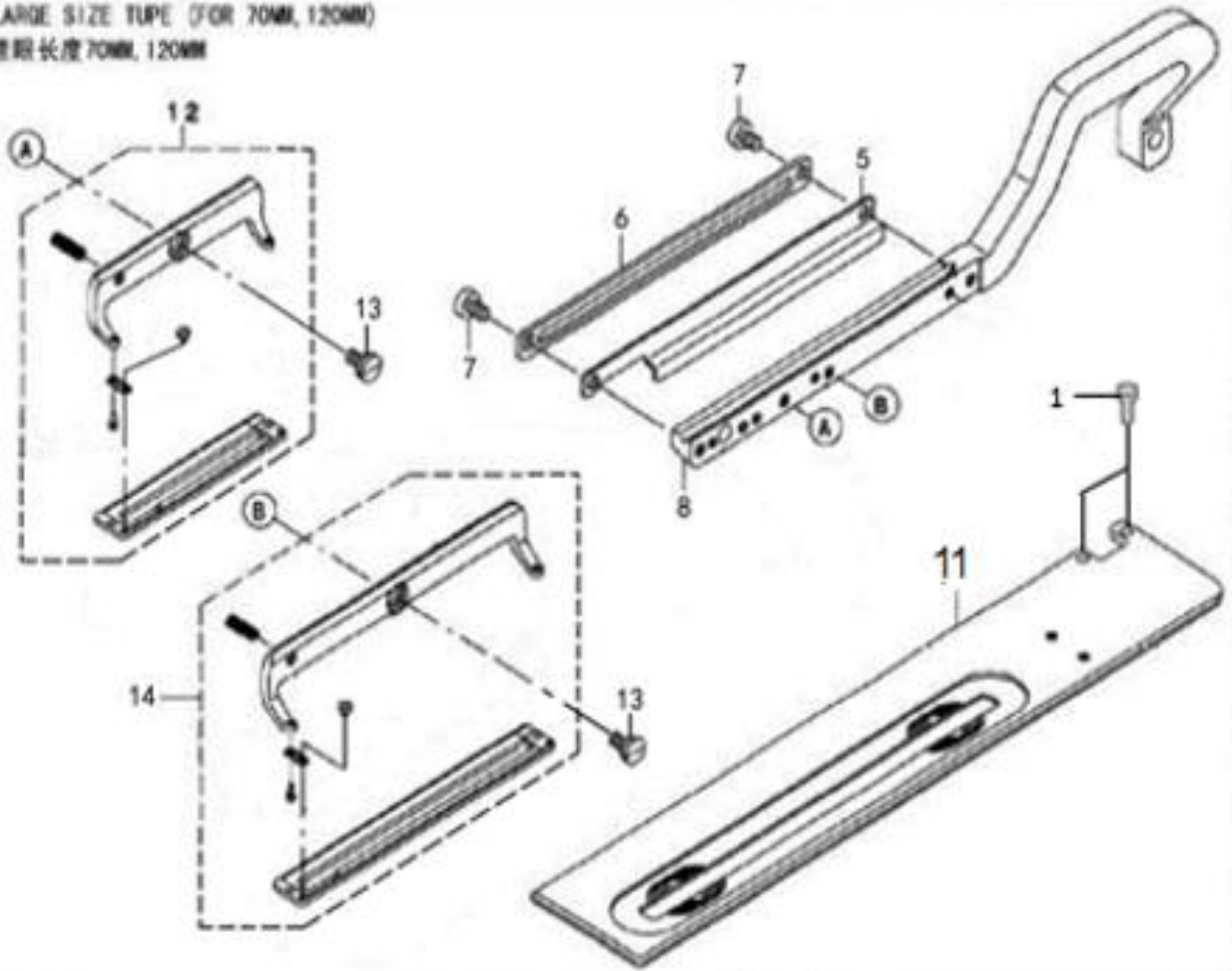
NO	零部件号	数量	零部件名称	NAME OF PARTS	老助记码
1	10103680	1	机头罩	HOOD	
2	10103530	1	小起子1.9X52	SMALL SCREWDRIVER 1.9X52	
3	10103540	1	起子3.4X70	SCREWDRIVER 3.4X70	
4	13101370	1	梭芯	BOBBIN	
5	10780500	4	机针DPX5 11#	MACHINE NEEDLE DPX5 11#	
6	13103620	1	内六角扳手	ALLEN WRENCH	
7	10814270	1	1790DS零件手册	1790DS PARTS MANUAL	
9	10103670	7	U形卡钉10X20	U-SHAPED STAPLES 10X20	
10	02000157	3	圆头木螺钉M4.5X20		
11	10104000	1	机头吸油纸	MACHINE HEAD BLOTTING PAPER	
12	13103650	1	拉杆组件(长)	TIE ROD ASSEMBLY (LONG)	
13	131-41	1	辅助桌板组件	1790DS AUXILIARY TABLE	
14	13206100	1	镊子	TWEEZERS	
15	10103790	1	润滑脂注入口	GREASE INLET	
16	10103480	1	油壶组件	OIL CAN COMPONENTS	
17	01206100	6	内六角螺栓(镀镍)M6X10	HEXAGON SOCKET HEAD BOLT M6X10	
18	13103680	1	切刀1吋	CUTTER 1 INCH	
19	10103780	1	润滑脂壳	GREASE SHELL	
20	10103490	1	油罐组件	OIL TANK COMPONENTS	
21	13103690	1	切刀5/8"	CUTTER 5/8"	
22	13103850	1	包装底垫块A(1790)	PACKING BOTTOM BLOCK A (1790)	
23	13103860	1	包装底垫块B(1790)	PACKING BOTTOM BLOCK B (1790)	
24	131-39	1	1790护目镜组件	1790 GOGGLES ASSEMBLY	
25	13100630	1	橡胶铰链(用于K款)	RUBBER HINGE (FOR K STYLE)	
25	13100620	1	橡胶铰链(用于S款)	RUBBER HINGE (FOR S STYLE)	
26	13100500	2	铰链轴	HINGE SHAFT	
27	13100510	1	铰链座A	HINGE SEAT A	
28	13100520	1	铰链座B	HINGE SEAT B	
29	13100490	1	铰链套	HINGE SLEEVE	
30	00406050	8	六角螺母M6*5	HEX NUT M6*5	
31	13100530	1	防油罩	OIL COVER	
32	13103630	1	定时调节钩(1790K)	TIMING ADJUSTMENT HOOK (1790K)	
32	13103720	1	定时调节钩(1790S)	TIMING ADJUSTMENT HOOK (1790S)	
33	13103730	1	切刀3/8"	CUTTER 3/8"	
34	10814280	1	1790DS使用说明书	1790DS INSTRUCTION MANUAL	
35	10772880	1	把手	HANDLE	
36	10106250	1	电源标签	POWER LABEL	
37	ZJ000169	1	1790DS油盘组件	1790DS OIL PAN ASSEMBLY	
38	13103770	1	内六角扳手M3	ALLEN KEY M3	
39	10103550	1	起子5.5X190	SCREWDRIVER 5.5X190	
40	13100450	1	底座盖板	BASE COVER	
41	13103810	1	机头支撑柱	HEAD SUPPORT COLUMN	
42	13100610	4	橡胶垫片(1790K)	RUBBER GASKET (1790K)	
42	13100600	4	橡胶垫片(1790S)	RUBBER GASKET (1790S)	
43	01745162	6	木螺钉M4.5X16	WOOD SCREW M4.5X16	
44	02000018	4	内六角螺栓M4X8(发黑)	HEXAGON SOCKET BOLT M4X8 (BLACKENED)	
45	10736200	1	1790DS上泡沫箱	1790DS UPPER FOAM BOX	
46	50104040	3	扎带4X150(黑色)	CABLE TIE 4X150 (BLACK)	
47	01735165	6	木螺钉M3.5X16	WOOD SCREW M3.5X16	
48	01206650	4	内六角螺栓M6X65	HEXAGON SOCKET BOLT M6X65	
49	00506070	4	平垫圈L6	FLAT WASHER L6	
50	00606000	4	弹簧垫圈2-6	SPRING WASHER 2-6	
51	10734640	1	1790DS下泡沫箱	1790DS LOWER FOAM BOX	
52	30131180	1	风扇保护罩(50x50)	FAN PROTECTION COVER (50X50)	
53	01504100	4	十字盘头螺钉M4X10	PHILLIPS PAN HEAD SCREW M4X10	



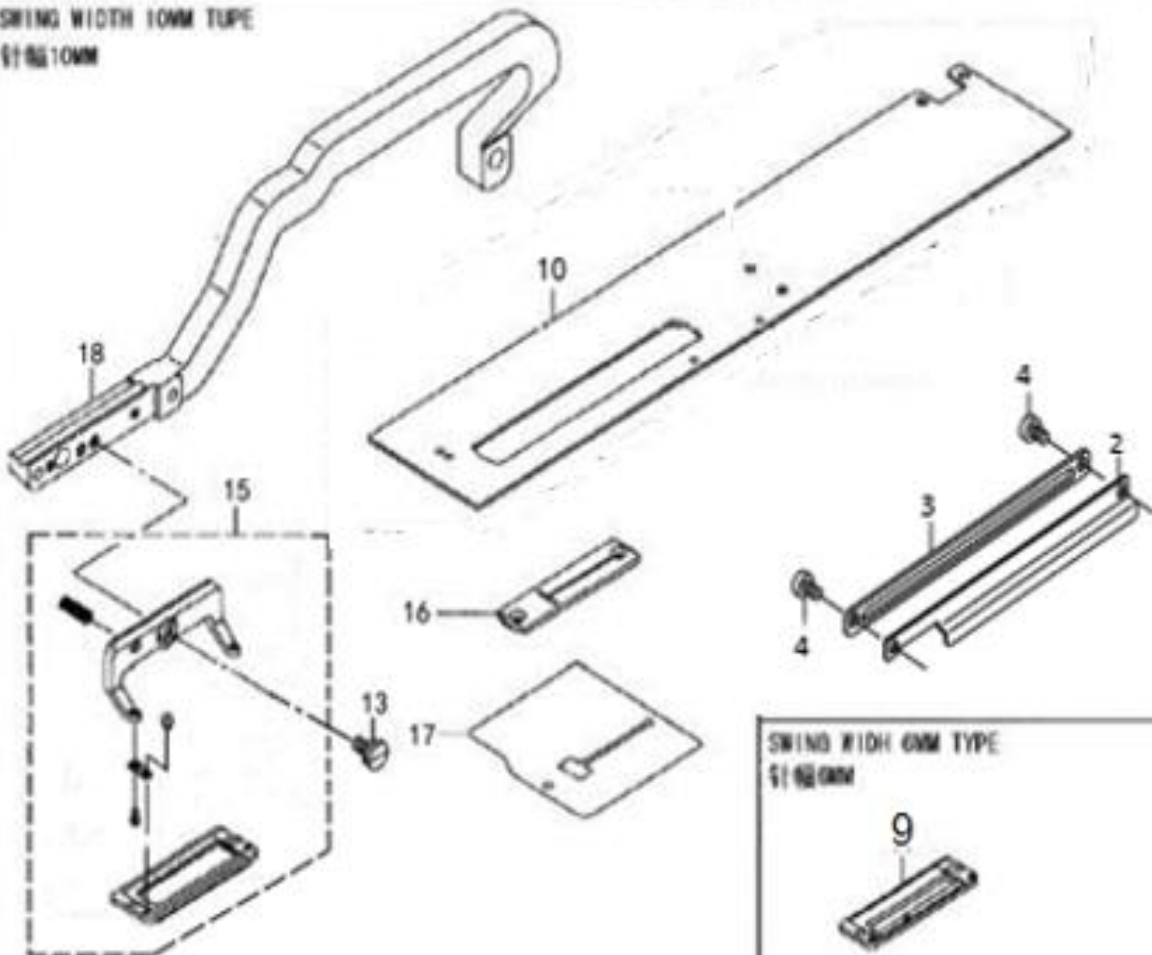
## 13. 线架装置部件/Wire rack device parts

NO	零部件号	数量	零部件名称	NAME OF PARTS	老助记码
1	10103650	1	线架组件2DR	WIRE RACK ASSEMBLY 2DR	

LARGE SIZE TUPE (FOR 70MM, 120MM)  
 锁眼长度70MM, 120MM



SWING WIDTH 10MM TUPE  
 针幅10MM



SWING WIDTH 6MM TYPE  
 针幅6MM



## 14. 特殊类型部件/Special type parts

NO	零部件号	数量	零部件名称	NAME OF PARTS	老助记码
1	01204085	2	内六角螺栓M4X8	HEXAGON SOCKET BOLT M4X8	
2	13101870	1	剪线板	TRIMMING BOARD	
3	13101750	1	压脚前后送料导向板	FEEDING GUIDE PLATE BEFORE AND AFTER	
4	02000044	2	一字螺钉M5X8	SLOTTED SCREW M5X8	
5	13103920	1	剪线板120B	THREAD TRIMMING BOARD 120B	
6	13103930	1	压脚前后送料导向板120	PRESSER FOOT FEEDING GUIDE PLATE 120	
7	02000044	2	一字螺钉M5X8 (镀镍)	SLOTTED SCREW M5X8 (NICKEL-PLATED)	
8	13103940	1	压脚支架120MM	PRESSER FOOT BRACKET 120MM	
9	13104340	1	压脚板 (S) (宽幅10mm)	PRESSER FOOT PLATE (S) (WIDTH 10MM)	
10	13101540	1	送料板	FEEDING PLATE	
11	13103950	1	送料板120MM	FEEDING PLATE 120MM	
12	13101900	1	压脚组件 (1790S)	PRESSER FOOT ASSEMBLY (1790S)	
13	13104110	3	一字压脚螺钉 (镀镍)	SLOTTED PRESSER FOOT SCREW	
14	13103970	1	压脚组件120MM	PRESSER FOOT ASSEMBLY 120MM	
15	13101880	1	压脚组件 (1790K)	PRESSER FOOT ASSEMBLY (1790K)	
16	13104360	1	针板 (宽幅10mm)	NEEDLE PLATE (WIDTH 10MM)	
17	13104350	1	防油板 (宽幅10mm)	OIL-PROOF BOARD (WIDTH 10MM)	
18	13104330	1	压脚支架 (宽幅10mm)	PRESSER FOOT HOLDER (WIDTH 10MM)	

# GT1790DAT

COMPUTER CONTROLLED, HIGH SPEED, LOCKSTITCH  
BUTTON HOLE SEWING MACHINE



This machine may only be used by adequately trained operators after having fully read and understood the instruction manual.

Parts are subject in design changes without prior notice .

**VETRON TYPICAL EUROPE GmbH**  
Clara-Immerwahr-Str. 6  
67661 Kaiserslautern, Germany  
Tel.: +49 6301 320 75-0  
Fax: +49 6301 320 75-11

info@vetrontypical.com  
www.vetrontypical.com

